

## PRODUCT MONOGRAPH

### **P<sup>r</sup>PAXIL CR**

paroxetine controlled release tablets

12.5 mg, 25 mg and 37.5 mg paroxetine (as paroxetine hydrochloride)

Selective Serotonin Reuptake Inhibitor

GlaxoSmithKline Inc.  
7333 Mississauga Road  
Mississauga, Ontario  
L5N 6L4

Date of Revision:  
March 8, 2018

Submission Control No: 211651

©2018 GSK group of companies or its licensor.  
Trademarks are owned by or licensed to the GSK group of companies.

**Table of Contents**

**PART I: HEALTH PROFESSIONAL INFORMATION.....3**

SUMMARY PRODUCT INFORMATION .....3

INDICATIONS AND CLINICAL USE.....3

CONTRAINDICATIONS .....5

WARNINGS AND PRECAUTIONS.....6

ADVERSE REACTIONS.....15

DRUG INTERACTIONS .....33

DOSAGE AND ADMINISTRATION .....38

OVERDOSAGE .....41

ACTION AND CLINICAL PHARMACOLOGY .....42

STORAGE AND STABILITY.....45

DOSAGE FORMS, COMPOSITION AND PACKAGING .....45

**PART II: SCIENTIFIC INFORMATION .....46**

PHARMACEUTICAL INFORMATION.....46

CLINICAL TRIALS .....47

DETAILED PHARMACOLOGY .....49

TOXICOLOGY .....51

REFERENCES .....53

**PART III: CONSUMER INFORMATION.....58**

## PAXIL CR

paroxetine controlled release tablets

### PART I: HEALTH PROFESSIONAL INFORMATION

#### SUMMARY PRODUCT INFORMATION

Route of Administration	Dosage Form / Strength	Nonmedicinal Ingredients
Oral	12.5 mg, 25 mg and 37.5 mg controlled release tablets	This product contains lactose monohydrate. Nonmedicinal ingredients are: colloidal silicon dioxide, glyceryl behenate, hydroxypropyl methylcellulose, magnesium stearate, methacrylic acid copolymer type C, polyethylene glycol, polysorbate 80, polyvinylpyrrolidinone, sodium lauryl sulphate, talc, titanium dioxide, triethyl citrate. PAXIL CR 12.5 mg tablets also contain D&C yellow No.10 aluminium lake, FD&C yellow No. 6 aluminium lake, and yellow ferric oxide. PAXIL CR 25 mg tablets also contain D&C red No. 30 aluminium lake and red ferric oxide. PAXIL CR 37.5 mg tablets also contain FD&C blue No. 2 and yellow ferric oxide.

#### INDICATIONS AND CLINICAL USE

##### Adults

##### **Depression**

PAXIL CR (paroxetine hydrochloride) is indicated for symptomatic relief of Major Depressive Disorder.

PAXIL CR has not been systematically evaluated beyond 12 weeks in controlled clinical trials; however, the effectiveness of immediate-release paroxetine hydrochloride in maintaining a response in depression for at least 6 months has been demonstrated in a placebo-controlled trial (see CLINICAL TRIALS). The physician who elects to use PAXIL CR for extended periods should periodically re-evaluate the long-term usefulness of the drug for the individual patient.

## **Panic Disorder**

PAXIL CR is indicated for the symptomatic treatment of panic disorder, with or without agoraphobia.

Panic disorder (DSM-IV) is characterized by recurrent unexpected panic attacks, i.e., a discrete period of intense fear or discomfort in which four (or more) of the following symptoms develop abruptly and reach a peak within 10 minutes: (1) palpitations, pounding heart, or accelerated heart rate; (2) sweating; (3) trembling or shaking; (4) sensations of shortness of breath or smothering; (5) feeling of choking; (6) chest pain or discomfort; (7) nausea or abdominal distress; (8) feeling dizzy, unsteady, lightheaded, or faint; (9) derealization (feelings of unreality) or depersonalization (being detached from oneself); (10) fear of losing control; (11) fear of dying; (12) paresthesias (numbness or tingling sensations); (13) chills or hot flushes.

## **Social Phobia (Social Anxiety Disorder)**

PAXIL CR is indicated for the symptomatic relief of generalized social phobia (social anxiety disorder), a disorder characterized by marked and persistent fear, anxious anticipation, or avoidance of multiple social situations (e.g. interacting with strangers, attending social gatherings, dealing with authority figures) and/or performance situations (e.g. eating, writing, working while being observed, or public speaking). A diagnosis of social phobia/social anxiety disorder should not be made unless the fear, anxious anticipation, or avoidance of social and/or performance situations interferes significantly with the person's normal routine, occupational functioning, social life, or causes marked distress.

## **Premenstrual Dysphoric Disorder**

PAXIL CR is indicated for the symptomatic treatment of premenstrual dysphoric disorder (PMDD). The efficacy of PAXIL CR in the treatment of PMDD was established in 3 placebo-controlled trials (see CLINICAL TRIALS).

The essential features of PMDD, according to DSM-IV, include markedly depressed mood, anxiety or tension, affective lability, and persistent anger or irritability. Other features include decreased interest in usual activities, difficulty concentrating, lack of energy, change in appetite or sleep, and feeling out of control. Physical symptoms associated with PMDD include breast tenderness, headache, joint and muscle pain, bloating, and weight gain. These symptoms occur regularly, in most menstrual cycles, during the luteal phase and remit within a few days following the onset of menses; the disturbance markedly interferes with work or school or with usual social activities and relationships with others. Typically, the symptoms are comparable in severity (but not duration) to those of a major depressive episode. The presence of the cyclical pattern of symptoms must be confirmed by at least two consecutive months of prospective daily symptom ratings. It is estimated that at least 75% of women report minor or isolated premenstrual changes; however, only 3 to 5% of women experience symptoms that may meet the criteria for PMDD. In making the diagnosis, care should be taken to rule out other cyclical mood disorders that may be exacerbated by treatment with an antidepressant.

### **Long-Term Use of PAXIL CR**

The effectiveness of PAXIL CR in long-term use (i.e. more than 12 weeks for depression, panic disorder and social phobia and more than 3 menstrual cycles for premenstrual dysmorphic disorder) has not yet been established in controlled trials for depression, panic disorder, social phobia or premenstrual dysmorphic disorder. The physician who elects to use PAXIL CR for extended periods in these indications should periodically re-evaluate the long-term usefulness of the drug for individual patients (see DOSAGE AND ADMINISTRATION).

### **Geriatrics (>65 years of age)**

Evidence from clinical studies indicates that there are differences in the pharmacokinetic profile of paroxetine in the geriatric population relative to younger adults, which may be associated with differences in safety or effectiveness. A brief discussion can be found in the appropriate sections (see WARNINGS AND PRECAUTIONS, Special Populations-Geriatrics; ACTIONS AND CLINICAL PHARMACOLOGY; DOSAGE AND ADMINISTRATION).

### **Pediatrics (<18 years of age)**

**PAXIL CR is not indicated for use in patients below the age of 18 years (see WARNINGS AND PRECAUTIONS, General, Potential Association With Behavioural and Emotional Changes, Including Self-Harm).**

## **CONTRAINDICATIONS**

**Hypersensitivity:** PAXIL CR (paroxetine hydrochloride) is contraindicated in patients who are known to be hypersensitive to the drug or any of its components. For a complete listing, see DOSAGE FORMS, COMPOSITION AND PACKAGING.

**Monoamine Oxidase Inhibitors:** In patients receiving serotonin reuptake inhibitors (SSRIs) in combination with a MAO inhibitor, there have been reports of serious, sometimes fatal reactions, including hyperthermia, rigidity, myoclonus, autonomic instability with possible rapid fluctuations of vital signs, and mental status changes that include extreme agitation progressing to delirium and coma. These reactions have also been reported in patients who have recently discontinued SSRI treatment and have begun treatment on a MAO inhibitor. Some cases presented with features resembling serotonin syndrome or neuroleptic malignant syndrome (see WARNINGS AND PRECAUTIONS, Serotonin Syndrome/Neuroleptic Malignant Syndrome). Therefore, PAXIL CR should not be used in combination with MAO inhibitors [including linezolid, an antibiotic which is a reversible non-selective MAO inhibitor and methylthionium chloride (methylene blue)] or within a minimum of 2 weeks of terminating treatment with MAO inhibitors. Treatment with PAXIL CR should then be initiated cautiously and dosage increased gradually until optimal response is reached. MAO inhibitors should not be introduced within 2 weeks of cessation of therapy with PAXIL CR.

**Thioridazine:** Thioridazine administration alone produces prolongation of the QTc interval, which is associated with serious ventricular arrhythmias, such as torsade de pointes-type arrhythmias and sudden death. This effect appears to be dose related. An *in vivo* study suggests that drugs which inhibit P450 2D6, including certain SSRI's such as paroxetine, fluoxetine and fluvoxamine, will elevate plasma levels of thioridazine. Therefore, PAXIL CR should not be used in combination with thioridazine or within a minimum of 2 weeks of terminating treatment with thioridazine. At least 2 weeks should be allowed after discontinuing PAXIL CR therapy before initiating treatment with thioridazine.

**Pimozide:** The concomitant use of PAXIL CR and pimozide is contraindicated as paroxetine has been shown to increase plasma pimozide levels. Elevation of pimozide blood concentration may result in QT interval prolongation and severe arrhythmias including torsade de pointes (see Drug Interactions).

## **WARNINGS AND PRECAUTIONS**

### **General**

#### **POTENTIAL ASSOCIATION WITH BEHAVIOURAL AND EMOTIONAL CHANGES, INCLUDING SELF-HARM.**

##### **Pediatrics: Placebo-Controlled Clinical Trial Data**

- **Recent analyses of placebo-controlled clinical trial safety databases from SSRIs and other newer antidepressants suggests that use of these drugs in patients under the age of 18 may be associated with behavioural and emotional changes, including an increased risk of suicidal ideation and behaviour over that of placebo.**
- **The small denominators in the clinical trial database, as well as the variability in placebo rates, preclude reliable conclusions on the relative safety profiles among these drugs.**

##### **Adult and Pediatrics: Additional data**

- **There are clinical trial and post-marketing reports with SSRIs and other newer antidepressants, in both pediatrics and adults, of severe agitation-type adverse events coupled with self-harm or harm to others. The agitation-type events include: akathisia, agitation, disinhibition, emotional lability, hostility, aggression, and depersonalization. In some cases, the events occurred within several weeks of starting treatment.**

**Rigorous clinical monitoring for suicidal ideation or other indicators of potential for suicidal behaviour is advised in patients of all ages. This includes monitoring for agitation-type emotional and behavioural changes.**

An FDA meta-analysis of placebo-controlled clinical trials of antidepressant drugs in adult patients ages 18 to 24 years with psychiatric disorders showed an increased risk of suicidal behaviour with antidepressant compared to placebo.

**Discontinuation Symptoms: Patients currently taking PAXIL CR should NOT be discontinued abruptly, due to risk of discontinuation symptoms. At the time that a medical decision is made to discontinue an SSRI or other newer antidepressant drug, a gradual reduction in the dose rather than an abrupt cessation is recommended.**

#### **Discontinuation of Treatment with PAXIL CR**

When discontinuing treatment, patients should be monitored for symptoms which may be associated with discontinuation (e.g. dizziness, sleep disturbances including abnormal dreams, sensory disturbances (including paresthesias, electric shock sensations and tinnitus), agitation, anxiety, headache, tremor, confusion, diarrhea, nausea, vomiting and sweating) or other symptoms which may be of clinical significance [see ADVERSE REACTIONS, Adverse Events following Discontinuation of Treatment (or Dose Reduction)-Post-Marketing]. A gradual reduction in the dose rather than abrupt cessation is recommended whenever possible. If intolerable symptoms occur following a decrease in the dose or upon discontinuation of treatment, dose titration should be managed on the basis of the patient's clinical response. (see ADVERSE REACTIONS and DOSAGE AND ADMINISTRATION).

#### **PAXIL CR Treatment During Pregnancy Effects on Newborns**

Epidemiological studies of pregnancy outcomes following maternal exposure to antidepressants in the first trimester have reported an increase in the risk of congenital malformations, particularly cardiovascular (e.g. ventricular and atrial septal defects), associated with the use of paroxetine. If a patient becomes pregnant while taking PAXIL CR, consideration should be given to switching to other treatment options. Treatment with PAXIL CR should only be continued for an individual pregnant patient, if the potential benefits outweigh the potential risks. Initiation of paroxetine for women who intend to become pregnant, or are in their first trimester of pregnancy, should be considered only after other treatment options have been evaluated (see WARNINGS AND PRECAUTIONS, Special Populations).

Post-marketing reports indicate that some neonates exposed to PAXIL CR, SSRIs (Selective Serotonin Reuptake Inhibitors), or other newer antidepressants late in the third trimester have developed complications requiring prolonged hospitalization, respiratory support, and tube feeding. Such complications can arise immediately upon delivery. When treating a pregnant woman with PAXIL CR during the third trimester, the physician should carefully consider the potential risks and benefits of treatment (see WARNINGS AND PRECAUTIONS, Special Populations; DOSAGE AND ADMINISTRATION, Special Patient Populations-Treatment of Pregnant Women During the Third Trimester).

### **Potential for reduced efficacy of Tamoxifen with concomitant SSRI use, including PAXIL CR**

The antitumor agent tamoxifen is a pro-drug requiring metabolic activation by CYP2D6. Inhibition of CYP2D6 can lead to reduced plasma concentrations of a primary active metabolite (endoxifen). Chronic use of CYP2D6 inhibitors, including certain SSRIs, together with tamoxifen can lead to persistent reduction in levels of endoxifen (see also DRUG INTERACTIONS, Tamoxifen). Some studies have shown that the efficacy of tamoxifen, as measured by the risk of breast cancer relapse/mortality, may be reduced when co-prescribed with PAXIL CR as a result of paroxetine's irreversible inhibition of CYP2D6. This risk may increase with longer duration of co-administration. When tamoxifen is used for the treatment of breast cancer, prescribers should consider using an alternative antidepressant with little or no CYP2D6 inhibition.

### **Psychomotor Impairment**

Although paroxetine did not cause sedation or interfere with psychomotor performance in placebo-controlled studies in normal subjects, patients should be advised to avoid driving a car or operating hazardous machinery until they are reasonably certain that PAXIL CR does not affect them adversely.

### **Bone Fracture Risk**

Epidemiological studies show an increased risk of bone fractures following exposure to some antidepressants, including SSRIs. The risks appear to be greater at the initial stages of treatment, but significant increased risks were also observed at later stages of treatment. The possibility of fracture should be considered in the care of patients treated with PAXIL CR. Elderly patients and patients with important risk factors for bone fractures should be advised of possible adverse events which increase the risk of falls, such as dizziness and orthostatic hypotension, especially at the early stages of treatment but also soon after withdrawal. Preliminary data from observational studies show association of SSRIs and low bone mineral density in older men and women. Until further information becomes available, a possible effect on bone mineral density with long-term treatment with SSRIs, including PAXIL CR, cannot be excluded, and may be a potential concern for patients with osteoporosis or major risk factors for bone fractures.

**The following additional precautions are listed alphabetically.**

### **Carcinogenesis and Mutagenesis**

See TOXICOLOGY for animal data.

### **Cardiovascular**

PAXIL CR or PAXIL IR have not been evaluated or used to any appreciable extent in patients with a recent history of myocardial infarction or unstable heart disease. The usual precautions should be observed in patients with cardiac conditions.



### **Concomitant Illnesses**

Clinical experience with PAXIL CR or PAXIL IR in patients with certain concomitant systemic illnesses is limited. Caution is advisable in using PAXIL CR in patients with diseases or conditions that could affect metabolism or hemodynamic responses.

### **Dependence Liability**

PAXIL CR or PAXIL IR have not been systematically studied, in animals or humans, for its potential for abuse, tolerance, or physical dependence. Physicians should carefully evaluate patients for history of drug abuse and follow such patients closely, observing them for signs of misuse or abuse of PAXIL CR.

### **Endocrine and Metabolism**

**Serum Cholesterol Elevation:** Several public domain studies have shown increased LDL-cholesterol levels of ~10% in volunteers and patients taking paroxetine for 8 to 12 weeks, which generally normalized after paroxetine discontinuation. In addition, of the patients in placebo-controlled clinical trials for whom baseline and on-treatment measurements were taken, total serum levels of cholesterol showed a mean increase of ~ 1.5 mg/dL in paroxetine-treated patients (n = 653), compared to a mean decrease of ~ 5.0 mg/dL in placebo-treated patients (n = 379). Increases from baseline of 45 mg/dL or greater were recorded in 6.6% of paroxetine-treated patients compared to 2.6% of placebo-treated patients (see Monitoring and Laboratory Tests, Serum Cholesterol Elevation).

These data should be taken into consideration when treating patients with underlying cardiac risk factors.

### **Hematologic**

**Abnormal Bleeding:** SSRIs including PAXIL CR may increase the risk of bleeding events by causing abnormal platelet aggregation. Concomitant use of acetylsalicylic acid (ASA), nonsteroidal anti-inflammatory drugs (NSAIDs), warfarin and other anticoagulants may add to the risk. Case reports and epidemiological studies (case-control and cohort design) have demonstrated an association between use of drugs that interfere with serotonin reuptake and the occurrence of gastrointestinal bleeding. Bleeding events related to SSRIs use have ranged from ecchymoses, hematomas, epistaxis, and petechiae to life-threatening haemorrhages. Gastrointestinal and gynaecological bleeding have also been reported following treatment with PAXIL CR.

Patients should be cautioned about the risk of bleeding associated with the concomitant use of PAXIL CR and NSAIDs, ASA, or other drugs that affect coagulation (see DRUG INTERACTIONS, Drugs Affecting Platelet Function). Caution is advised in patients with a history of bleeding disorder or predisposing conditions (e.g. thrombocytopenia). (see ADVERSE REACTIONS).

## **Hepatic/Biliary/Pancreatic**

**Hepatic Impairment:** Pharmacokinetic studies of PAXIL IR in subjects with clinically significant hepatic impairment suggest that prolongation of the elimination half-life and increased plasma levels can be expected in this patient group. PAXIL CR should be used with caution and dosages restricted to the lower end of the range in patients with clinically significant hepatic impairment (see DOSAGE AND ADMINISTRATION, Special Patient Populations; ACTIONS AND CLINICAL PHARMACOLOGY, Hepatic Insufficiency).

## **Immune**

**Hypersensitivity:** The 12.5 mg controlled release tablet coating contains an azo dye (FD&C Yellow No. 6 aluminium lake) which may cause allergic reactions.

## **Neurologic**

**Epilepsy:** As with other antidepressants, PAXIL CR should be used with caution in patients with epilepsy.

**Seizures:** During clinical trials, the overall incidence of seizures was 0.15% in patients treated with PAXIL IR. However, patients with a history of convulsive disorders were excluded from these studies. Caution is recommended when the drug is administered to patients with a history of seizures. The drug should be discontinued in any patient who develops seizures.

**Serotonin Syndrome/Neuroleptic Malignant Syndrome:** On rare occasions, serotonin syndrome or neuroleptic malignant syndrome-like events have occurred in association with treatment of PAXIL CR, particularly when given in combination with other serotonergic and/or neuroleptic/antipsychotic drugs. As these syndromes may result in potentially life-threatening conditions, treatment with PAXIL CR should be discontinued if patients develop a combination of symptoms, possibly including hyperthermia, rigidity, myoclonus, autonomic instability with possible rapid fluctuations of vital signs, mental status changes including confusion, irritability, extreme agitation progressing to delirium and coma, and supportive symptomatic treatment should be initiated. Due to the risk of serotonergic syndrome or neuroleptic malignant syndrome, PAXIL CR should not be used in combination with MAO inhibitors [including linezolid, an antibiotic which is a reversible non-selective MAO inhibitor and methylthionium chloride (methylene blue)] or serotonin precursors (such as L-tryptophan, oxitriptan) and should be used with caution in patients receiving other serotonergic drugs (e.g., triptans, lithium, tramadol, St. John's Wort, most tricyclic antidepressants) or neuroleptics/antipsychotics (see CONTRAINDICATIONS and DRUG INTERACTIONS).

## **Ophthalmologic**

**Angle-Closure Glaucoma:** As with other antidepressants, PAXIL CR can cause mydriasis which may trigger an angle-closure attack in a patient with anatomically narrow ocular angles. Caution should be used when PAXIL is prescribed for patients with untreated narrow angles. Open-angle glaucoma is not a risk factor for angle-closure glaucoma. Patients should be informed to seek immediate medical assistance if they experience eye pain, changes in vision or swelling or redness in or around the eye.

## **Psychiatric**

**Suicide:** The possibility of a suicide attempt is inherent in depression and may persist until remission occurs. Patients with depression may experience worsening of their depressive symptoms and/or the emergence of suicidal ideation and behaviours (suicidality) whether or not they are taking antidepressant medications. Notwithstanding, high risk patients should be closely supervised throughout therapy with appropriate consideration to the possible need for hospitalization. In order to minimize the opportunity for overdose, prescriptions for PAXIL CR should be written for the smallest quantity of drug consistent with good patient management.

Because of the well-established comorbidity between depression and other psychiatric disorders, the same precautions observed when treating patients with depression should be observed when treating patients with other psychiatric disorders (see WARNINGS AND PRECAUTIONS, Potential Association with Behavioural and Emotional Changes, Including Self-Harm).

**Activation of Mania/Hypomania:** During clinical testing in a patient population comprised primarily of unipolar depressed patients, approximately 1% of PAXIL IR-treated patients experienced manic reactions. When bipolar patients were considered as a sub-group the incidence of mania was 2%. As with all drugs effective in the treatment of depression, PAXIL CR should be used with caution in patients with a history of mania.

A major depressive episode may be the initial presentation of bipolar disorder. Patients with bipolar disorder may be at an increased risk of experiencing manic episodes when treated with antidepressants alone. Therefore, the decision to initiate symptomatic treatment of depression should only be made after patients have been adequately assessed to determine if they are at risk for bipolar disorder.

**Electroconvulsive Therapy (ECT):** The efficacy and safety of the concurrent use of PAXIL CR and ECT have not been studied.

## **Renal**

**Hyponatremia:** Several cases of hyponatremia have been reported. The hyponatremia appeared to be reversible when PAXIL IR was discontinued. The majority of these occurrences have been in elderly individuals, some in patients taking diuretics or who were otherwise volume depleted.

**Renal Impairment:** Since PAXIL CR is extensively metabolized by the liver, excretion of unchanged drug in urine is a minor route of elimination. However, single dose pharmacokinetic studies in subjects with clinically significant renal impairment suggest that plasma levels of paroxetine are elevated in such subjects. Paroxetine should therefore be used with caution and the dosage restricted to the lower end of the range in patients with clinically significant renal impairment (see DOSAGE AND ADMINISTRATION, Special Patient Populations; ACTIONS AND CLINICAL PHARMACOLOGY, Renal Insufficiency).

## **Sexual Function/Reproduction**

Some clinical studies have shown that SSRIs (including PAXIL) may affect sperm quality. This effect appears to be reversible following discontinuation of treatment. Changes in sperm quality may affect fertility in some men (see also Part II: TOXICOLOGY, Reproduction and Impairment of Fertility Studies).

## **Special Populations**

### **Pregnant Women and Newborns**

Risk of Cardiovascular Malformations following first trimester exposure to SSRIs: Epidemiological studies of pregnancy outcomes following maternal exposure to antidepressants in the first trimester have reported an increase in the risk of congenital malformations, particularly cardiovascular (e.g. ventricular and atrial septal defects), associated with the use of paroxetine. The data suggest that the risk of having an infant with a cardiovascular defect following maternal paroxetine exposure is approximately 1/50 (2%), compared with an expected rate for such defects of approximately 1/100 (1%) infants in the general population. In general, septal defects range from those that are symptomatic and may require surgery, to those that are asymptomatic and may resolve spontaneously. Information about the severity of the septal defects reported in the studies is not available.

**While on PAXIL CR: Pregnancy, or intent to become pregnant:**

If a patient becomes pregnant while taking PAXIL CR, or intends to become pregnant, she should be informed of the current estimate of increased risk to the fetus with PAXIL CR over other antidepressants. Examinations of additional databases, as well as updated analyses, may result in changes to the current risk estimates. Consideration should be given to switching to other treatment options, including another antidepressant or non-pharmaceutical treatment such as cognitive behavioural therapy. Treatment with PAXIL CR should only be continued for an individual patient, if the potential benefits outweigh the potential risks.

Due to the potential for discontinuation symptoms, if a decision is taken to discontinue PAXIL CR treatment, a gradual reduction in the dose rather than an abrupt cessation is recommended (see WARNINGS AND PRECAUTIONS, Discontinuation of Treatment With PAXIL CR; ADVERSE REACTIONS, Adverse Reactions Following Discontinuation of Treatment and DOSAGE AND ADMINISTRATION, Discontinuation of Treatment).

**Initiation of paroxetine:** For women who intend to become pregnant, or are in their first trimester of pregnancy, initiation of paroxetine should be considered only after other treatment options have been evaluated.

Complications following late third trimester exposure to SSRIs:

Post-marketing reports indicate that some neonates exposed to PAXIL CR, SSRIs (Selective Serotonin Reuptake Inhibitors), or other newer antidepressants late in the third trimester have developed complications requiring prolonged hospitalization, respiratory support, and tube feeding. Such complications can arise immediately upon delivery. Reported clinical findings have included respiratory distress, cyanosis, apnea, seizures, temperature instability, feeding difficulty, vomiting, hypoglycaemia, hypotonia, hypertonia, hyperreflexia, tremor, jitteriness, irritability, and constant crying. These features are consistent with either a direct toxic effect of SSRIs and other newer antidepressants, or, possibly, a drug discontinuation syndrome. It should be noted that, in some cases, the clinical picture is consistent with serotonin syndrome (see WARNINGS AND PRECAUTIONS, Neurologic-Serotonin Syndrome/Neuroleptic Malignant Syndrome). When treating a pregnant woman with PAXIL CR during the third trimester, the physician should carefully consider the potential risks and benefits of treatment (see DOSAGE AND ADMINISTRATION, Special Patient Populations-Treatment of Pregnant Women during the Third Trimester).

There have been post-marketing reports of premature birth in pregnant women exposed to paroxetine or other SSRIs. The casual relationship between PAXIL CR and the emergence of these events has not been established.

Risk of PPHN and exposure to SSRIs (including paroxetine):

Epidemiological studies on persistent pulmonary hypertension of the newborn (PPHN) have shown that the use of SSRIs (including PAXIL CR) in pregnancy, particularly use in late pregnancy, was associated with an increased risk of PPHN. PPHN occurs in 1-2

per 1,000 live births in the general population and is associated with substantial neonatal morbidity and mortality. In a retrospective case-control study of 377 women whose infants were born with PPHN and 836 women whose infants were born healthy, the risk for developing PPHN was approximately six-fold higher for infants exposed to SSRIs after the 20th week of gestation compared to infants who had not been exposed to antidepressants during pregnancy (Odds Ratio 6.1, 95% CI 2.2-16.8). A study using data from the Swedish Medical Birth Register for 831,324 infants born in 1997-2005 found an increased risk of PPHN of approximately 2-fold associated with patient-reported maternal use of SSRIs in the first trimester of pregnancy (Risk Ratio 2.4, 95% CI 1.2-4.3), and an increased risk of PPHN of approximately 4-fold associated with a combination of patient-reported maternal use of SSRIs in the first trimester and an antenatal SSRI prescription in later pregnancy (Risk Ratio 3.6, 95% CI 1.2-8.3).

**Nursing Women:** The concentrations of paroxetine detected in the breast milk of lactating women are similar to those in the mother's plasma. Lactating women should not nurse their infants while receiving paroxetine unless in the opinion of the treating physician, breast feeding is necessary, in which case the infant should be closely monitored.

**Pediatrics (< 18 years of age): PAXIL CR is not indicated for use in patients below the age of 18 years (see WARNINGS AND PRECAUTIONS, Potential Association with Behavioural and Emotional Changes, Including Self Harm).** See also INDICATIONS, Pediatrics; DOSAGE AND ADMINISTRATION, Special Patient Populations-Children).

Controlled clinical studies in depression failed to demonstrate efficacy and do not support the use of paroxetine in the treatment of children under the age of 18 years with depression. Moreover, a higher incidence of adverse events related to behavioural and emotional changes, including self harm, was reported with paroxetine treatment compared to placebo during controlled clinical trials in depression, OCD and social anxiety disorder (see ADVERSE DRUG REACTIONS, Clinical Trial Adverse Drug Reactions-Pediatrics).

**Geriatrics (≥ 65 years of age):** Administration of PAXIL CR to the elderly is associated with increased plasma levels and prolongation of the elimination half-life relative to younger adults (see ACTION AND CLINICAL PHARMACOLOGY). Elderly patients should be initiated and maintained at the lowest daily dose of paroxetine which is associated with clinical efficacy (see DOSAGE AND ADMINISTRATION).

Evaluation of approximately 800 elderly patients (≥ 65 years) treated with PAXIL IR (10-40 mg daily) in worldwide premarketing clinical trials revealed no unusual pattern of adverse events relative to the clinical experience in younger patients.

In a controlled study focusing specifically on elderly patients with depression, PAXIL CR (12.5-50 mg daily) was demonstrated to be safe and effective in the treatment of elderly patients (> 60 years of age) with depression (see CLINICAL TRIALS and

ADVERSE REACTIONS-Table 2). However, it is not possible to rule out potential age-related differences in safety and effectiveness during chronic use, particularly in elderly patients who have concomitant systemic illnesses or who are receiving concomitant drugs.

### **Monitoring and Laboratory Tests**

**Serum Cholesterol Elevation:** Of the patients in placebo-controlled clinical trials for whom baseline and on-treatment measurements were taken, increases from baseline of 45 mg/dL or greater were recorded in 6.6% of paroxetine-treated patients compared to 2.6% of placebo-treated patients (see ADVERSE REACTIONS, Laboratory Changes-Cholesterol and WARNINGS AND PRECAUTIONS, Endocrine and Metabolism).

These data should be taken into consideration when treating patients with underlying cardiac risk factors.

## **ADVERSE REACTIONS**

### **Adverse Drug Reaction Overview**

#### **Commonly Observed Adverse Events**

##### ***Depression***

The most commonly observed adverse events associated with the use of PAXIL CR in a pool of two trials (incidence of 5.0% or greater and incidence for PAXIL CR at least twice that for placebo, derived from Table 1 below) were: abnormal ejaculation, abnormal vision, constipation, decreased libido, diarrhea, dizziness, female genital disorders, nausea, somnolence, sweating, trauma, tremor, and yawning.

Using the same criteria, the adverse events associated with the use of PAXIL CR in a study of elderly patients with depression were: abnormal ejaculation, constipation, decreased appetite, dry mouth, impotence, infection, libido decreased, sweating, and tremor.

##### ***Panic Disorder***

In the pool of panic disorder studies, the adverse events meeting these criteria were: abnormal ejaculation, somnolence, impotence, libido decreased, tremor, sweating, and female genital disorders (generally anorgasmia or difficulty achieving orgasm).

##### ***Social Anxiety Disorder***

The most commonly observed adverse events associated with the use of PAXIL CR (incidence of 5.0% or greater and incidence for PAXIL CR at least twice that for placebo, derived from Table 4 below) in the social phobia (social anxiety disorder) study were nausea, asthenia, abnormal ejaculation, sweating, somnolence, impotence, insomnia, and decreased libido.

### ***Premenstrual Dysphoric Disorder***

The most commonly observed adverse events associated with the use of PAXIL CR, either during continuous dosing or luteal phase dosing (incidence of 5.0% or greater and incidence for PAXIL CR at least twice that for placebo, derived from Table 5 below) were: nausea, asthenia, decreased libido, somnolence, insomnia, female genital disorders, sweating, dizziness, diarrhea and constipation.

In the luteal phase dosing PMDD trial, which employed dosing of 12.5 mg/day or 25 mg/day of PAXIL CR limited to the 2 weeks prior to the onset of menses over 3 consecutive menstrual cycles, adverse events were evaluated during the first 14 days of each off-drug phase. When the 3 off-drug phases were combined, the following adverse events were reported at an incidence of 2% or greater for PAXIL CR and were at least twice the rate of that reported for placebo: infection (5.3% versus 2.5%), depression (2.8% versus 0.8%), insomnia (2.4% versus 0.8%), sinusitis (2.4% versus 0%) and asthenia (2.0% versus 0.8%).

### **Adverse Events Leading to Discontinuation of Treatment**

The information included under the "Adverse Events Leading to Discontinuation of Treatment" subsection of ADVERSE REACTIONS is based on data from seven short-term, placebo-controlled clinical trials. Three of these studies were conducted in patients with depression, three studies were done in patients with panic disorder, and one study was conducted in patients with social anxiety disorder. Two of the studies in depression, which enrolled patients in the age range 18 to 65 years, are pooled. Information from a third study of depression, which focussed on elderly patients (ages 60 to 88), is presented separately as is the information from the panic disorder studies and the information from the social anxiety disorder study. Information on additional adverse events associated with PAXIL CR and the immediate-release formulation of paroxetine hydrochloride is included in a separate subsection (see OTHER EVENTS).



### **Depression**

Ten percent (21/212) of PAXIL CR patients discontinued treatment due to an adverse event in a pool of two studies of patients with depression. The most common events ( $\geq 1\%$ ) associated with discontinuation and considered to be drug related (i.e. those events associated with dropout at a rate approximately twice or greater for PAXIL CR compared to placebo) included the following:

	<b>PAXIL CR (n=212)</b>	<b>Placebo (n=211)</b>
Nausea	3.7%	0.5%
Asthenia	1.9%	0.5%
Dizziness	1.4%	0.0%
Somnolence	1.4%	0.0%

In a placebo-controlled study of elderly patients with depression, 13% (13/104) of PAXIL CR patients discontinued due to an adverse event. Events meeting the above criteria included the following:

	<b>PAXIL CR (n=104)</b>	<b>Placebo (n=109)</b>
Nausea	2.9%	0.0%
Headache	1.9%	0.9%
Depression	1.9%	0.0%
LFT's abnormal	1.9%	0.0%

### **Panic Disorder**

Eleven percent (50/444) of PAXIL CR patients in panic disorder studies discontinued treatment due to an adverse event. Events meeting the above criteria included the following:

	<b>PAXIL CR (n=444)</b>	<b>Placebo (n=445)</b>
Nausea	2.9%	0.4%
Insomnia	1.8%	0.0%
Headache	1.4%	0.2%
Asthenia	1.1%	0.0%

### **Social Anxiety Disorder**

Three percent (5/186) of patients treated with PAXIL CR in the social anxiety disorder study discontinued treatment due to an adverse event. Events meeting the above criteria included the following:

	<i>PAXIL CR</i> <i>(n=186)</i>	<i>Placebo</i> <i>(n=184)</i>
Nausea	2.2%	0.5%
Headache	1.6%	0.5%
Diarrhea	1.1%	0.5%

### **Premenstrual Dysphoric Disorder**

Thirteen percent (88/681) of patients treated with PAXIL CR in PMDD studies of continuous dosing discontinued treatment due to an adverse event. Nine percent (34/366) of patients treated with PAXIL CR in PMDD studies of luteal phase dosing discontinued treatment due to an adverse event.

The most common events (> 1%) associated with discontinuation and considered to be drug related (i.e. those events associated with dropout at a rate approximately twice or greater for PAXIL CR compared to placebo) included the following:

	Continuous Dosing			Intermittent Dosing		
	PAXIL CR 25 mg (n = 348)	PAXIL CR 12.5 mg (n = 333)	Placebo (n = 349)	PAXIL CR 25 mg (n = 116)	PAXIL CR 12.5 mg (n = 130)	Placebo (n = 120)
<b>TOTAL</b>	15%	9.9%	6.3%	5.2%	5.4%	0.0%
Nausea*	6.0%	2.4%	0.9%	3.4%	2.3%	0.0%
Asthenia	4.9%	3.0%	1.4%	0.9%	1.5%	0.0%
Somnolence*	4.3%	1.8%	0.3%	-	-	-
Insomnia	2.3%	1.5%	0.0%	1.7%	3.1%	0.0%
Concentration Impaired *	2.0%	0.6%	0.3%	-	-	-
Dry mouth*	2.0%	0.6%	0.3%	-	-	-
Dizziness*	1.7%	0.6%	0.6%	2.6%	0.8%	0.0%
Decreased Appetite*	1.4%	0.6%	0.0%	-	-	-
Sweating*	1.4%	0.0%	0.3%	-	-	-
Tremor*	1.4%	0.3%	0.0%	1.7%	0.8%	0.0%
Yawn*	1.1%	0.0%	0.0%	-	-	-
Diarrhea	0.9%	1.2%	0.0%	-	-	-

\*Events considered to be dose dependent are defined as events having an incidence rate with 25 mg of PAXIL CR that was at least twice that with 12.5 mg of PAXIL CR (as well as the placebo group).

### **Adverse Events following Discontinuation of Treatment (or Dose Reduction)**

#### ***Clinical Trials***

Adverse events while discontinuing therapy with PAXIL CR were not systematically evaluated in most clinical trials. However, in one placebo-controlled clinical trial in social anxiety disorder involving 370 patients (186 on PAXIL CR and 184 on placebo), utilizing daily doses of PAXIL CR up to 37.5 mg/day, spontaneously reported adverse events while discontinuing therapy with PAXIL CR were evaluated. Patients receiving 37.5 mg/day underwent an incremental decrease in the daily dose by 12.5 mg/day to a dose of 25 mg/day for 1 week before treatment was stopped. For patients receiving 25 mg/day or 12.5 mg/day, treatment was stopped without an incremental decrease in dose. With this regimen, the following adverse events were reported at an incidence of 2% or greater for PAXIL CR and were at least twice that reported for placebo: dizziness

(13.9 versus 2.2%), insomnia (4.4 versus 2.2%), paresthesia (4.4 versus 0%) vertigo (3.3 versus 0%), and additional symptoms described by the investigator as associated with tapering or discontinuing PAXIL CR including electric shock sensations (5.6 versus 0.6%). These events were reported as serious in 1.7% (3/180) of patients who discontinued therapy with PAXIL CR.

The following adverse events have been reported at an incidence of 2% or greater for PAXIL IR and were at least twice that reported for placebo: abnormal dreams (2.3 vs 0.5%), paresthesias (2.0 vs 0.4%), and dizziness (7.1 vs 1.5%). The majority of these events were mild to moderate, self-limiting and did not require medical intervention. These adverse events were noted in GAD and PTSD clinical trials employing a taper phase regimen for discontinuation of treatment. This regimen involved an incremental decrease in the daily dose by 10 mg/day at weekly intervals. When a daily dose of 20 mg/day was reached, patients were continued on this dose for 1 week before treatment was stopped.

### ***Post-Marketing***

There have been spontaneous reports of adverse events upon the discontinuation of PAXIL and PAXIL CR (particularly when abrupt), including but not limited to the following: dizziness, sensory disturbances (including paresthesias, electric shock sensations and tinnitus), agitation/restlessness, anxiety, nausea, tremor, confusion, diarrhea, vomiting, sweating, headache and sleep disturbances (abnormal dreams). Generally, these symptoms are mild to moderate; however, in some patients they may be severe in intensity. They usually occur within the first few days of discontinuing treatment, but there have been very rare reports of such symptoms in patients who have inadvertently missed a dose. Generally, these symptoms are self-limiting and usually resolve within 2 weeks, though in some individuals they may be prolonged (2-3 months or more). Symptoms associated with discontinuation have been reported for other selective serotonin reuptake inhibitors.

Patients should be monitored for these or any other symptoms when discontinuing treatment. If intolerable symptoms occur following a decrease in the dose or upon discontinuation of treatment, dose titration should be managed on the basis of the patient's clinical response (see WARNINGS AND PRECAUTIONS and DOSAGE AND ADMINISTRATION).

### **Clinical Trial Adverse Drug Reactions**

*Because clinical trials are conducted under very specific conditions the adverse reaction rates observed in the clinical trials may not reflect the rates observed in practice and should not be compared to the rates in the clinical trials of another drug. Adverse drug reaction information from clinical trials is useful for identifying drug-related adverse events and for approximating rates.*

## **Incidence in Controlled Clinical Trials**

### ***Adults***

Table 1 enumerates adverse events that occurred at an incidence of 1% or more among PAXIL CR-treated patients, aged 18 to 65, who participated in two short-term (12 week) placebo-controlled trials in depression in which patients were dosed in a range of 25 to 62.5 mg/day. Table 2 enumerates adverse events reported at an incidence of 5% or greater among elderly PAXIL CR-treated patients (ages 60-88) who participated in a short-term (12 week) placebo-controlled trial in depression in which patients were dosed in a range of 12.5 to 50 mg/day. Table 3 enumerates adverse events reported at an incidence of 1% or greater among PAXIL CR treated patients (ages 19-72) who participated in short-term (10 week) placebo-controlled trials in panic disorder in which patients were dosed in a range of 12.5 to 75 mg/day. Table 4 enumerates adverse events reported at an incidence of 1% or greater among adult patients treated with PAXIL CR who participated in a short-term (12 week) double-blind, placebo-controlled trial in Table 5 social anxiety disorder in which patients were dosed at a range of 12.5 to 37.5 mg/day enumerates adverse events that occurred at an incidence of 1% or more among PAXIL CR treated patients who participated in three 12 week placebo-controlled trials in PMDD in which patients were dosed at 12.5 mg/day or 25 mg/day and in one 12 week placebo-controlled trial in which patients were dosed for 2 weeks prior to the onset of menses (luteal phase dosing) at 12.5 mg/day or 25 mg/day. Reported adverse events were classified using a standard COSTART-based dictionary terminology.

The prescriber should be aware that these figures cannot be used to predict the incidence of side effects in the course of usual medical practice where patient characteristics and other factors differ from those which prevailed in the clinical trials. Similarly, the cited frequencies cannot be compared with figures obtained from other clinical investigations involving different treatments, uses and investigators. The cited figures, however, do provide the prescribing physician with some basis for estimating the relative contribution of drug and nondrug factors to the side effect incidence rate in the population studied.

**Table 1 Treatment-Emergent Adverse Events Occurring In  $\geq 1\%$  of PAXIL CR Patients in a Pool of Two Studies in Depression<sup>1,2</sup>**

Body System/Adverse Event	% Reporting Event	
	PAXIL CR (n=212)	Placebo (n=211)
<b>Body as a Whole</b>		
Headache	27%	20%
Asthenia	14%	9%
Infection <sup>3</sup>	8%	5%
Abdominal Pain	7%	4%
Back Pain	5%	3%
Trauma <sup>4</sup>	5%	1%
Pain <sup>5</sup>	3%	1%
Allergic Reaction <sup>6</sup>	2%	1%
<b>Cardiovascular System</b>		
Tachycardia	1%	0%
Vasodilatation <sup>7</sup>	2%	0%
<b>Digestive System</b>		
Nausea	22%	10%
Diarrhea	18%	7%
Dry Mouth	15%	8%
Constipation	10%	4%
Flatulence	6%	4%
Decreased Appetite	4%	2%
Vomiting	2%	1%
<b>Nervous System</b>		
Somnolence	22%	8%
Insomnia	17%	9%
Dizziness	14%	4%
Libido Decreased	7%	3%
Tremor	7%	1%
Hypertonia	3%	1%
Paresthesia	3%	1%
Agitation	2%	1%
Confusion	1%	0%
<b>Respiratory System</b>		
Yawn	5%	0%
Rhinitis	4%	1%
Cough Increased	2%	1%
Bronchitis	1%	0%
<b>Skin and Appendages</b>		
Sweating	6%	2%
Photosensitivity	2%	0%
<b>Special Senses</b>		
Abnormal Vision <sup>8</sup>	5%	1%
Taste Perversion	2%	0%
<b>Urogenital System</b>		
Abnormal Ejaculation <sup>9,10</sup>	26%	1%
Female Genital Disorder <sup>9,11</sup>	10%	<1%
Impotence <sup>9</sup>	5%	3%
Urinary Tract Infection	3%	1%
Menstrual Disorder <sup>9</sup>	2%	<1%
Vaginitis <sup>9</sup>	2%	0%

1. Adverse events for which the PAXIL CR (paroxetine hydrochloride) reporting incidence was less than or equal to the placebo incidence are not included. These events are: abnormal dreams, anxiety, arthralgia, depersonalization, dysmenorrhea, dyspepsia, hyperkinesia, increased appetite, myalgia, nervousness, pharyngitis, purpura, rash, respiratory disorder, sinusitis, urinary frequency and weight gain.
2. <1% means greater than zero and less than 1%.
3. Mostly flu.
4. A wide variety of injuries with no obvious pattern.
5. Pain in a variety of locations with no obvious pattern.
6. Most frequently seasonal allergic symptoms.
7. Usually flushing.
8. Mostly blurred vision.
9. Based on the number of males or females.
10. Mostly anorgasmia or delayed ejaculation.
11. Mostly anorgasmia or delayed orgasm.

**Table 2 Treatment-Emergent Adverse Events Occurring in  $\geq 5\%$  of PAXIL CR Patients in a Study of Elderly Patients with Depression<sup>1,2</sup>**

Body System/Adverse Event	% Reporting Event	
	PAXIL CR (n=104)	Placebo (n=109)
<b>Body as a Whole</b>		
Headache	17%	13%
Asthenia	15%	14%
Trauma	8%	5%
Infection	6%	2%
<b>Digestive System</b>		
Dry Mouth	18%	7%
Diarrhea	15%	9%
Constipation	13%	5%
Dyspepsia	13%	10%
Decreased Appetite	12%	5%
Flatulence	8%	7%
<b>Nervous System</b>		
Somnolence	21%	12%
Insomnia	10%	8%
Dizziness	9%	5%
Libido Decreased	8%	<1%
Tremor	7%	0%
<b>Skin and Appendages</b>		
Sweating	10%	<1%
<b>Urogenital System</b>		
Abnormal Ejaculation <sup>3,4</sup>	17%	3%
Impotence <sup>3</sup>	9%	3%

1. Adverse events for which the PAXIL CR (paroxetine hydrochloride) reporting incidence was less than or equal to the placebo incidence are not included. These events are nausea and respiratory disorder.
2. <1% means greater than zero and less than 1%.
3. Based on the number of males.
4. Mostly anorgasmia or delayed ejaculation.

**Table 3 Treatment-Emergent Adverse Events Occurring in  $\geq 1\%$  of PAXIL CR Patients in a Pool of Three Panic Disorder Studies<sup>1,2</sup>**

Body System/Adverse Event	% Reporting Event	
	PAXIL CR (n=444)	Placebo (n=445)
<b>Body as a Whole</b>		
Asthenia	15%	10%
Abdominal Pain	6%	4%
Trauma <sup>3</sup>	5%	4%
<b>Cardiovascular System</b>		
Vasodilation <sup>4</sup>	3%	2%
<b>Digestive System</b>		
Nausea	23%	17%
Dry Mouth	13%	9%
Diarrhea	12%	9%
Constipation	9%	6%
Decreased Appetite	8%	6%
<b>Metabolic/Nutritional Disorders</b>		
Weight Loss	1%	0%
<b>Musculoskeletal System</b>		
Myalgia	5%	3%
<b>Nervous System</b>		
Insomnia	20%	11%
Somnolence	20%	9%
Libido Decreased	9%	4%
Nervousness	8%	7%
Tremor	8%	2%
Anxiety	5%	4%
Agitation	3%	2%
Hypertonia <sup>5</sup>	2%	<1%
Myoclonus	2%	<1%
<b>Respiratory System</b>		
Sinusitis	8%	5%
Yawn	3%	0%
<b>Skin and Appendages</b>		
Sweating	7%	2%
<b>Special Senses</b>		
Abnormal Vision <sup>6</sup>	3%	<1%
<b>Urogenital System</b>		
Abnormal Ejaculation <sup>7,8</sup>	27%	3%
Impotence <sup>7</sup>	10%	1%
Female Genital Disorders <sup>9,10</sup>	7%	1%
Urinary Frequency	2%	<1%
Urination Impaired	2%	<1%
Vaginitis <sup>9</sup>	1%	<1%

1. Adverse events for which the PAXIL CR reporting rate was less than or equal to the placebo rate are not included. These events are: abnormal dreams, allergic reaction, back pain, bronchitis, chest pain, concentration impaired, confusion, cough increased, depression, dizziness, dysmenorrhea, dyspepsia, fever, flatulence, headache, increased appetite, infection, menstrual disorder, migraine, pain, paresthesia, pharyngitis, respiratory disorder, rhinitis, tachycardia, taste perversion, thinking abnormal, urinary tract infection and vomiting.

2. <1% means greater than zero and less than 1%.

3. Various physical injuries.

4. Mostly flushing.

5. Mostly muscle tightness or stiffness.

6. Mostly blurred vision.

7. Based on the number of male patients.

8. Mostly anorgasmia or delayed ejaculation.

9. Based on the number of female patients.

10. Mostly anorgasmia or difficulty achieving orgasm.



**Table 4 Treatment-Emergent Adverse Effects Occurring in  $\geq 1\%$  of Patients Treated with PAXIL CR in a Social Phobia (Social Anxiety Disorder) Study<sup>1,2</sup>**

Body System/Adverse Event	% Reporting Event	
	PAXIL CR (n=186)	Placebo (n=184)
<b>Body as a Whole</b>		
Headache	23%	17%
Asthenia	18%	7%
Abdominal pain	5%	4%
Back pain	4%	1%
Trauma <sup>3</sup>	3%	<1%
Allergic reaction <sup>4</sup>	2%	<1%
Chest pain	1%	<1%
<b>Cardiovascular System</b>		
Hypertension	2%	0%
Migraine	2%	1%
Tachycardia	2%	1%
<b>Digestive System</b>		
Nausea	22%	6%
Diarrhea	9%	8%
Constipation	5%	2%
Dry mouth	3%	2%
Dyspepsia	2%	<1%
Decreased appetite	1%	<1%
Tooth disorder	1%	0%
<b>Metabolic/Nutritional Disorders</b>		
Weight gain	3%	1%
Weight loss	1%	0%
<b>Nervous System</b>		
Insomnia	9%	4%
Somnolence	9%	4%
Libido decreased	8%	1%
Dizziness	7%	4%
Tremor	4%	2%
Anxiety	2%	1%
Concentration impaired	2%	0%
Depression	2%	1%
Myoclonus	1%	<1%
Paresthesia	1%	<1%
<b>Respiratory System</b>		
Yawn	2%	0%
<b>Skin and Appendages</b>		
Sweating	14%	3%
Eczema	1%	0%
<b>Special Senses</b>		
Abnormal vision <sup>5</sup>	2%	0%
Abnormality of accommodation	2%	0%
<b>Urogenital System</b>		
Abnormal ejaculation <sup>6,7</sup>	15%	1%
Impotence <sup>6</sup>	9%	0%
Female genital disorders <sup>8,9</sup>	3%	0%

1. Adverse events for which the PAXIL CR reporting rate was less than or equal to the placebo rate are not included. These events are: dysmenorrhea, flatulence, gastroenteritis, hypertonia, infection, pain, pharyngitis, rash, respiratory disorder, rhinitis and vomiting.

2. <1% means greater than zero and less than 1%

4. Most frequently seasonal allergic symptoms.

6. Based on the number of male patients.

8. Based on the number of female patients.

3. Various physical injuries.

5. Mostly blurred vision.

7. Mostly anorgasmia or delayed ejaculation.

9. Mostly anorgasmia or difficulty achieving orgasm

**Table 5 Treatment-Emergent Adverse Events Occurring in >1% of PAXIL CR Patients in a Pool of Three Premenstrual Dysphoric Disorder Studies <sup>1,2</sup> or in 1 Premenstrual Dysphoric Disorder Study with Luteal Phase Dosing**

Body System/Adverse Event	% Reporting Event Continuous Dosing		% Reporting Event Luteal Phase Dosing	
	PAXIL CR (n=681)	Placebo (n=349)	PAXIL CR (n=246)	Placebo (n=120)
<b>Body as a Whole</b>				
Asthenia	17%	6%	15%	4%
Headache	15%	12%	-	-
Infection	6%	4%	-	-
Abdominal pain	-	-	3%	0%
<b>Cardiovascular System</b>				
Migraine	1%	<1%	-	-
<b>Digestive System</b>				
Nausea	17%	7%	18%	2%
Diarrhea	6%	2%	6%	0%
Constipation	5%	1%	2%	<1%
Dry Mouth	4%	2%	2%	<1%
Increased Appetite	3%	<1%	-	-
Decreased Appetite	2%	<1%	2%	0%
Dyspepsia	2%	1%	2%	2%
Gingivitis	-	-	1%	0%
<b>Metabolic and Nutritional Disorders</b>				
Generalized Edema	-	-	1%	<1%
Weight Gain	-	-	1%	<1%
<b>Musculoskeletal System</b>				
Arthralgia	2%	1%	-	-
<b>Nervous System</b>				
Libido Decreased	12%	5%	9%	6%
Somnolence	9%	2%	3%	<1%
Insomnia	8%	2%	7%	3%
Dizziness	7%	3%	6%	3%
Tremor	4%	<1%	5%	0%
Concentration Impaired	3%	<1%	1%	0%
Nervousness	2%	<1%	3%	2%
Anxiety	2%	1%	-	-
Lack of Emotion	2%	<1%	-	-
Depression	-	-	2%	<1%
Vertigo	-	-	2%	<1%
Abnormal Dreams	1%	<1%	-	-
Amnesia	-	-	1%	0%
<b>Respiratory System</b>				
Sinusitis	-	-	4%	2%
Yawn	2%	<1%	-	-
Bronchitis	-	-	2%	0%
Cough Increased	1%	<1%	-	-
<b>Skin and Appendages</b>				
Sweating	7%	<1%	6%	<1%
<b>Special Senses</b>				
Abnormal Vision	-	-	1%	0%
<b>Urogenital System</b>				
Female Genital Disorders <sup>3</sup>	8%	1%	2%	0%
Menorrhagia	1%	<1%	-	-
Vaginal Monoliasis	1%	<1%	-	-
Menstrual Disorder	-	-	1%	0%

1. Adverse events for which the PAXIL CR reporting rate was less than or equal to the placebo rate are not included. These events are: abdominal pain, back pain, pain, trauma, weight gain, myalgia, pharyngitis, respiratory disorder, rhinitis, sinusitis, pruritis, dysmenorrhea, menstrual disorder, urinary tract infection and vomiting
2. <1% means greater than zero and less than 1%
3. Mostly anorgasmia or difficulty achieving orgasm

**Dose Dependency of Adverse Events:** The following table shows results in PMDD trials of common adverse events, defined as events with an incidence of 1% with 25 mg of PAXIL CR that was at least twice that with 12.5 mg of PAXIL CR and with placebo.

**Table 6 Incidence of Common Adverse Events in Placebo, 12.5 mg and 25 mg of PAXIL CR in a Pool of 3 Fixed-Dose Continuous Dosing PMDD Trials**

	<b>PAXIL CR 25 mg (n = 348)</b>	<b>PAXIL CR 12.5 mg (n = 333)</b>	<b>Placebo (n = 349)</b>
<b>Common Adverse Event</b>			
Sweating	8.9%	4.2%	0.9%
Tremor	6.0%	1.5%	0.3%
Concentration Impaired	4.3%	1.5%	0.6%
Yawn	3.2%	0.9%	0.3%
Paresthesia	1.4%	0.3%	0.3%
Hyperkinesia	1.1%	0.3%	0.0%
Vaginitis	1.1%	0.3%	0.3%

A comparison of adverse event rates in a fixed-dose study comparing immediate-release paroxetine with placebo in the treatment of depression revealed a clear dose dependency for some of the more common adverse events associated with the use of immediate-release paroxetine.

**Male and Female Sexual Dysfunction with SSRIs:** Although changes in sexual desire, sexual performance and sexual satisfaction often occur as manifestations of a psychiatric disorder, they may also be a consequence of pharmacologic treatment. In particular, some evidence suggests that selective serotonin reuptake inhibitors (SSRIs) can cause such untoward sexual experiences.

Reliable estimates of the incidence and severity of untoward experiences involving sexual desire, performance and satisfaction are difficult to obtain, however, in part because patients and physicians may be reluctant to discuss them. Accordingly, estimates of the incidence of untoward sexual experience and performance, cited in product labeling, are likely to underestimate their actual incidence.

The percentage of patients reporting symptoms of sexual dysfunction in the pool of two placebo-controlled trials in non-elderly patients with depression, in the pool of three placebo-controlled trials in patients with panic disorder, in the placebo-controlled trial in patients with social anxiety disorder, and in the luteal phase dosing and in the pool of three placebo-controlled trials in female patients with PMDD are as follows:

**Table 7 The Percentage of Patients Reporting Symptoms of Sexual Dysfunction**

	Depression		Panic Disorder		Social Anxiety Disorder		PMDD Continuous Dosing		PMDD Luteal Phase Dosing	
	PAXIL CR	Placebo	PAXIL CR	Placebo	PAXIL CR	Placebo	PAXIL CR	Placebo	PAXIL CR	Placebo
<b>n (males)</b>	<b>78</b>	<b>78</b>	<b>162</b>	<b>194</b>	<b>88</b>	<b>97</b>	<b>n/a</b>	<b>n/a</b>	<b>n/a</b>	<b>n/a</b>
Decreased libido	10%	5%	9%	6%	13%	1%	n/a	n/a	n/a	n/a
Ejaculatory disturbance	26%	1%	27%	3%	15%	1%	n/a	n/a	n/a	n/a
Impotence	5%	3%	10%	1%	9%	0%	n/a	n/a	n/a	n/a
<b>n (females)</b>	<b>134</b>	<b>133</b>	<b>282</b>	<b>251</b>	<b>98</b>	<b>87</b>	<b>681</b>	<b>349</b>	<b>246</b>	<b>120</b>
Decreased libido	4%	2%	8%	2%	4%	1%	12%	5%	9%	6%
Orgasmic disturbance	10%	<1%	7%	1%	3%	0%	8%	1%	2%	0%

There are no adequate controlled studies examining sexual dysfunction with paroxetine treatment.

Paroxetine treatment has been associated with several cases of priapism. In those cases with a known outcome, patients recovered without sequelae.

While it is difficult to know the precise risk of sexual dysfunction associated with the use of SSRIs, physicians should routinely inquire about such possible side effects.

***Laboratory Changes - Cholesterol***

Clinically and statistically relevant increases in cholesterol levels have been noted in studies using paroxetine (see WARNINGS AND PRECAUTIONS, Endocrine and Metabolism).

Of the patients in placebo-controlled clinical trials for whom baseline and on-treatment measurements were taken, total serum levels of cholesterol showed a mean increase of ~ 1.5 mg/dL in paroxetine-treated patients (n = 653), compared to a mean decrease of ~ 5.0 mg/dL in placebo-treated patients (n = 379). Increases from baseline of 45 mg/dL or greater were recorded in 6.6% of paroxetine-treated patients compared to 2.6% of placebo-treated patients.

***Pediatrics***

In placebo-controlled clinical trials conducted with pediatric patients aged 7 to 18 years with depression, OCD and Social Anxiety Disorder (involving 633 patients treated with paroxetine and 542 patients treated with placebo), the following adverse events were reported in at least 2% of pediatric patients treated with PAXIL IR and occurred at a rate at least twice that for pediatric patients receiving placebo: emotional lability (including self-harm, suicidal thoughts, attempted suicide, crying, and mood fluctuations), hostility,

(predominantly aggression, oppositional behaviour and anger) decreased appetite, tremor, sweating, hyperkinesia, and agitation.

In the pediatric clinical trials in depression, OCD and Social Anxiety Disorder that included a taper phase regimen (307 patients aged 7 to 18 years treated with paroxetine and 291 patients treated with placebo), events reported upon discontinuation of treatment, which occurred in at least 2% of patients who received PAXIL IR and which occurred at a rate at least twice that of placebo, were: emotional lability (including suicidal ideation, suicide attempt, mood changes, and tearfulness), nervousness, dizziness, nausea, and abdominal pain (see WARNINGS AND PRECAUTIONS, Discontinuation of Treatment with PAXIL CR).

#### ***Other Events Observed During the Clinical Development of Paroxetine***

The following adverse events were reported during the clinical development of PAXIL CR tablets and/or the clinical development of the immediate-release formulation of paroxetine.

Adverse events for which frequencies are provided below occurred in clinical trials with the controlled release formulation of paroxetine. During its pre-marketing assessment in depression, panic disorder, social anxiety disorder, and PMDD, multiple doses of PAXIL CR were administered to 1,627 patients in phase 3 double-blind, controlled, out-patient studies. Untoward events associated with this exposure were recorded by clinical investigators using terminology of their own choosing. Consequently, it is not possible to provide a meaningful estimate of the proportion of individuals experiencing adverse events without first grouping similar types of untoward events into a smaller number of standardized event categories.

In the tabulations that follow, reported adverse events were classified using a COSTART-based dictionary. The frequencies presented, therefore, represent the proportion of the 1,627 patients exposed to PAXIL CR controlled release who experienced an event of the type cited on at least one occasion while receiving PAXIL CR. All reported events are included except those already listed in Tables 1, 2, 3, 4 or 5 and those events where a drug cause was remote. If the COSTART term for an event was so general as to be uninformative, it was deleted or, when possible, replaced with a more informative term. It is important to emphasize that although the events reported occurred during treatment with paroxetine, they were not necessarily caused by it.

Events are further categorized by body system and listed in order of decreasing frequency according to the following definitions: frequent adverse events are those occurring on one or more occasions in at least 1/100 patients (only those not already listed in the tabulated results from placebo-controlled trials appear in this listing); infrequent adverse events are those occurring in 1/100 to 1/1,000 patients; rare events are those occurring in fewer than 1/1,000 patients.

Adverse events for which frequencies are not provided occurred during the premarketing assessment of immediate-release paroxetine in phase 2 and 3 studies of depression, obsessive compulsive disorder, panic disorder, social anxiety disorder, generalized anxiety disorder, and posttraumatic stress disorder. The conditions and duration of exposure to immediate-release paroxetine varied greatly and included (in overlapping categories) open and double-blind studies, uncontrolled and controlled studies, inpatient and outpatient studies, and fixed-dose and titration studies. Only those events not previously listed for controlled release paroxetine are included. The extent to which these events may be associated with PAXIL CR is unknown.

Events are listed alphabetically within the respective body system. Events of major clinical importance are also described in the WARNINGS AND PRECAUTIONS section.

***Body as a Whole:*** Infrequent were chills, face edema, fever, flu syndrome, malaise; rare were abscess, anticholinergic syndrome, hypothermia; also observed were adrenergic syndrome, neck rigidity, sepsis.

***Immune System Disorders:*** Very rare were severe allergic reactions (including anaphylactoid reactions and angioedema).

***Cardiovascular System:*** Infrequent were angina pectoris, bradycardia, bundle branch block, hematoma, hypertension, hypotension, palpitation, postural hypotension, supraventricular tachycardia, syncope; rare was bundle branch block; also observed were arrhythmia nodal, atrial fibrillation, cerebrovascular accident, congestive heart failure, low cardiac output, myocardial infarct, myocardial ischemia, pallor, phlebitis, pulmonary embolus, supraventricular extrasystoles, thrombophlebitis, thrombosis, vascular headache, ventricular extrasystoles.

***Digestive System:*** Infrequent were bruxism, dysphagia, eructation, gastritis, gastroenteritis, gastroesophageal reflux, gingivitis, hemorrhoids, liver function tests abnormal, melena, pancreatitis, rectal hemorrhage, toothache, ulcerative stomatitis; rare were colitis, glossitis, gum hyperplasia, hepatosplenomegaly, increased salivation, intestinal obstruction, peptic ulcer, stomach ulcer, throat tightness; also observed were aphthous stomatitis, bloody diarrhea, bulimia, cardiospasm, cholelithiasis, duodenitis, enteritis, esophagitis, fecal impactions, fecal incontinence, gum hemorrhage, hematemesis, hepatitis, ileitis, ileus, jaundice, mouth ulceration, salivary gland enlargement, sialadenitis, stomatitis, tongue discoloration, tongue edema.

***Endocrine System:*** Infrequent were ovarian cyst, testes pain; rare were diabetes mellitus, hyperthyroidism; also observed were, goiter, hypothyroidism, thyroiditis.

***Hemic and Lymphatic System:*** Infrequent were anemia, eosinophilia, hypochromic anemia, leukocytosis, leukopenia, lymphadenopathy, purpura; rare was thrombocytopenia; also observed were anisocytosis, basophilia, bleeding time increased,

lymphedema, lymphocytosis, lymphopenia, microcytic anemia, monocytosis, normocytic anemia, thrombocythemia.

**Metabolic and Nutritional Disorders:** Frequent were increases in cholesterol levels. Infrequent were generalized edema, hyperglycemia, hyperkalemia, hypokalemia, peripheral edema, SGOT increased, SGPT increased, thirst; rare were bilirubinemia, dehydration, hyperkalemia, obesity; also observed were alkaline phosphatase increased, BUN increased, creatinine phosphokinase increased, gamma globulins increased, gout, hypercalcemia, hyperphosphatemia, hypocalcemia, hypoglycemia, hyponatremia, ketosis, lactic dehydrogenase increased, non-protein nitrogen (NPN) increased.

**Musculoskeletal System:** Infrequent were arthritis, bursitis, tendonitis; rare were myasthenia, myopathy, myositis; also observed were generalized spasm, osteoporosis, tenosynovitis, tetany.

**Nervous System:** Frequent was depression; infrequent were amnesia, convulsion, depersonalization, dystonia, emotional lability, hallucinations, hyperkinesia, hypesthesia, hypokinesia, incoordination, libido increased, neuralgia, neuropathy, nystagmus, paralysis, vertigo; rare were ataxia, coma, diplopia, dyskinesia, hostility, paranoid reaction, torticollis, withdrawal syndrome; also observed were abnormal gait, akathisia, akinesia, aphasia, choreoathetosis, circumoral paresthesia, delirium, delusions, dysarthria, euphoria, extrapyramidal syndrome, fasciculations, grand mal convulsion, hyperalgesia, irritability, manic reaction, manic-depressive reaction, meningitis, myelitis, peripheral neuritis, psychosis, psychotic depression, reflexes decreased, reflexes increased, stupor, trismus.

**Respiratory System:** Frequent was pharyngitis; infrequent were asthma, dyspnea, epistaxis, laryngitis, pneumonia; rare was stridor; also observed were dysphonia, emphysema, hemoptysis, hiccups, hyperventilation, lung fibrosis, pulmonary edema, respiratory flu, sputum increased.

**Skin and Appendages:** Frequent was rash; infrequent were acne, alopecia, dry skin, eczema, pruritus, urticaria; rare were exfoliative dermatitis, furunculosis, pustular rash, seborrhea; also observed were angioedema, ecchymosis, erythema multiforme, erythema nodosum, hirsutism, maculopapular rash, skin discoloration, skin hypertrophy, skin ulcer, sweating decreased, vesiculobullous rash; very rare were severe cutaneous adverse reactions (including erythema multiforme, Stevens-Johnson syndrome and toxic epidermal necrolysis).

**Special Senses:** Infrequent were conjunctivitis, earache, keratoconjunctivitis, mydriasis, photophobia, retinal hemorrhage, tinnitus; rare were blepharitis, visual field defect; also observed were amblyopia, anisocoria, blurred vision, cataract, conjunctival edema, corneal ulcer, deafness, exophthalmos, glaucoma, hyperacusis, night blindness, parosmia, ptosis, taste loss.

***Urogenital System:*** Frequent was dysmenorrhea\*; infrequent were albuminuria, amenorrhea\*, breast pain\*, cystitis, dysuria, prostatitis\*, urinary retention; rare were breast enlargement\*, breast neoplasm\*, female lactation, hematuria, kidney calculus, metrorrhagia, nephritis, nocturia, pregnancy and puerperal disorders\*, salpingitis, urinary incontinence, uterine fibroids enlarged\*; also observed were breast atrophy, ejaculatory disturbance, endometrial disorder, epididymitis, fibrocystic breast, leukorrhea, mastitis, oliguria, polyuria, pyuria, urethritis, urinary casts, urinary urgency, urolith, uterine spasm, vaginal hemorrhage.

\*Based on the number of men and women as appropriate.

### **Post-Marketing Adverse Drug Reactions**

Adverse events not listed above which have been reported since market introduction in patients taking immediate-release paroxetine hydrochloride include acute pancreatitis, hepatic events such as elevation of hepatic enzymes, and hepatitis, sometimes associated with jaundice, and/or liver failure (in very rare circumstances, with fatal outcomes), Guillain-Barré syndrome, priapism, thrombocytopenia, aggravated hypertension, syndrome of inappropriate ADH secretion, symptoms suggestive of hyperprolactinemia and galactorrhea, menstrual disorders (including menorrhagia, metrorrhagia and amenorrhea), blurred vision, extrapyramidal symptoms which have included akathisia, (characterized by an inner sense of restlessness and psychomotor agitation such as an inability to sit or stand still usually associated with subjective distress), bradykinesia, cogwheel rigidity, dystonia, hypertonia, oculogyric crisis which has been associated with concomitant use of pimozide, tremor and trismus, abnormal dreams (including nightmares), restless legs syndrome (RLS), vomiting, neuroleptic malignant syndrome-like events; serotonin syndrome (see WARNINGS AND PRECAUTIONS, Neurologic-Serotonin Syndrome/Neuroleptic Malignant Syndrome), persistent pulmonary hypertension (PPHN; see also WARNINGS AND PRECAUTIONS, Pregnant Women and Newborns, Risk of PPHN and exposure to SSRIs). There has been a case report of an elevated phenytoin level after 4 weeks of PAXIL IR and phenytoin co-administration. There has been a case report of severe hypotension when PAXIL IR was added to chronic metoprolol treatment. The causal relationship between PAXIL IR and the emergence of these events has not been established.

There have been spontaneous reports of adverse events upon the discontinuation of PAXIL CR and other selective serotonin reuptake inhibitors (particularly when abrupt) (see WARNINGS AND PRECAUTIONS, General-Discontinuation of Treatment with PAXIL CR and ADVERSE REACTIONS, Adverse Events Following Discontinuation of treatment).



## DRUG INTERACTIONS

### Serious Drug Interactions

- **Monoamine Oxidase Inhibitors:** See CONTRAINDICATIONS
- **Thioridazine:** See CONTRAINDICATIONS
- **Pimozide:** See CONTRAINDICATIONS

### Overview

Like some other selective serotonin re-uptake inhibitors, paroxetine inhibits the specific hepatic cytochrome P450 isozyme CYP2D6 which is responsible for the metabolism of debrisoquine and sparteine. Poor metabolizers of debrisoquine/sparteine represent approximately 5-10% of Caucasians. The median  $C_{\min}$  (ss) for PAXIL (20 mg daily) at steady-state in poor metabolizers (n=8) was almost triple that reported for extensive metabolizers (n=9). Although the full clinical significance of this effect has not been established, inhibition of CYP2D6 can lead to elevated plasma levels of co-administered drugs which are metabolized by this isozyme. Consideration should be given to decreasing the dose of the CYP2D6 metabolized drug or paroxetine and/or monitoring of drug plasma levels, especially when PAXIL is co-administered with drugs with a narrow therapeutic index.

PAXIL CR co-administration has been associated with elevated levels of the anti-cholinergic procyclidine, certain neuroleptics/antipsychotics (e.g. perphenazine, risperidone), tricyclic antidepressants (e.g. desipramine), atomoxetine, type 1C antiarrhythmics (e.g. propafenone), and theophylline.

Co-administration of phenobarbital or phenytoin with PAXIL CR has been associated with decreased levels of PAXIL CR or IR. When co-administered with cimetidine, PAXIL CR levels were elevated.

The concomitant use of PAXIL CR and alcohol has not been studied.

### Drug-Drug Interactions

**Monoamine Oxidase Inhibitors:** Combined use of PAXIL CR and monoamine oxidase inhibitors [including linezolid, an antibiotic which is a reversible non-selective MAO inhibitor and methylthionium chloride (methylene blue)] is contraindicated due to the potential for serious reactions with features resembling serotonin syndrome or neuroleptic malignant syndrome (see CONTRAINDICATIONS; WARNINGS AND PRECAUTIONS, Serotonin Syndrome/Neuroleptic Malignant Syndrome).

**Thioridazine:** Combined use of PAXIL CR and thioridazine is contraindicated due to a potential for elevated thioridazine plasma levels. Thioridazine treatment alone produces prolongation of the QTc interval, which is associated with serious ventricular arrhythmias, such as torsade de pointes-type arrhythmias, and sudden death (see CONTRAINDICATIONS).

**Pimozide:** In an open label study of healthy volunteers, co-administration of a single dose of 2 mg pimozide, under steady-state conditions of PAXIL (titrated to 60 mg daily) was associated with mean increases in pimozide AUC of 151% and  $C_{max}$  of 62%, compared to pimozide administered alone. This is likely explained by the known CYP2D6 inhibitory properties of paroxetine. Due to the narrow therapeutic index of pimozide and its known ability to prolong the QT interval, and produce severe cardiac arrhythmias including torsade de pointes, concomitant use of pimozide and PAXIL CR is contraindicated (see CONTRAINDICATIONS).

**Drugs Metabolized by Cytochrome P450 (CYP2D6):** In two studies, daily dosing of PAXIL (20 mg q.d.) under steady-state conditions increased the following mean pharmacokinetic parameters for a single (100 mg) dose of desipramine in extensive metabolizers:  $C_{max}$  (2 fold), AUC (6 fold), and  $T_{1/2}$  (3-5 fold). Concomitant steady-state PAXIL treatment did not result in any further impairment of desipramine elimination in poor metabolizers. Insufficient information is available to provide recommendations on the necessary dosage adjustments for tricyclic antidepressants or PAXIL CR, if these drugs are to be used in combination. Plasma tricyclic antidepressant concentrations may need to be monitored in such instances.

Concomitant use of PAXIL CR with other drugs metabolized by CYP2D6 has not been formally studied but may require lower doses than usually prescribed for either PAXIL CR or the other drug. Drugs metabolized by CYP2D6 include certain tricyclic antidepressants (e.g. nortriptyline, amitriptyline, imipramine and desipramine), selective serotonin reuptake inhibitors (e.g. fluoxetine), phenothiazine neuroleptics (e.g. perphenazine), risperidone, atomoxetine, Type IC antiarrhythmics (e.g. propafenone and flecainide), and metoprolol. Due to the risk of serious ventricular arrhythmias and sudden death potentially associated with elevated plasma levels of thioridazine, PAXIL CR and thioridazine should not be co-administered (see CONTRAINDICATIONS).

**Fosamprenavir/ritonavir:** Co-administration of fosamprenavir/ritonavir with paroxetine significantly decreased plasma levels of paroxetine (by ~60% in one study). Any dose adjustment should be guided by clinical effect (tolerability and efficacy).

**Tamoxifen:** Tamoxifen has an important active metabolite, endoxifen, which is produced by CYP2D6 and contributes significantly to the efficacy of tamoxifen. Irreversible inhibition of CYP2D6 by paroxetine leads to reduced plasma concentrations of endoxifen (see WARNINGS AND PRECAUTIONS, Potential for reduced efficacy of Tamoxifen with concomitant SSRI use, including PAXIL CR).

**Neuromuscular Blockers:** *In vitro* studies, as well as a small number of clinical reports suggest that some antidepressants including paroxetine may reduce plasma cholinesterase activity resulting in a prolongation of the neuromuscular blocking action of succinylcholine.

**Drugs Metabolized by Cytochrome P450 (CYP3A4):** An *in vivo* interaction study involving the co-administration under steady-state conditions of PAXIL and terfenadine, a substrate for CYP3A4, revealed no effect of PAXIL on terfenadine pharmacokinetics. In addition, *in vitro* studies have shown ketoconazole, a potent inhibitor of CYP3A4 activity, to be at least 100 times more potent than paroxetine as an inhibitor of the metabolism of several substrates for this enzyme, including terfenadine, astemizole, cisapride, triazolam and cyclosporin. Based on the assumption that the relationship between paroxetine's *in vitro*  $K_i$  and its lack of effect on terfenadine's *in vivo* clearance predicts its effect on other CYP3A4 substrates, paroxetine's extent of inhibition of CYP3A4 activity would not be expected to be of clinical significance.

**Microsomal Enzyme Inhibition/Induction:** The metabolism and pharmacokinetics of PAXIL CR may be affected by the induction or inhibition of drug metabolizing enzymes.

**Drugs Highly Bound to Plasma Protein:** Paroxetine is highly bound to plasma protein, therefore administration of PAXIL CR to a patient taking another drug that is highly protein bound may cause increased free concentrations of the other drug, potentially resulting in adverse events. Conversely, adverse effects could result from displacement of paroxetine by other highly bound drugs.

**Alcohol:** The concomitant use of PAXIL CR or IR and alcohol has not been studied and is not recommended. Patients should be advised to avoid alcohol while taking PAXIL CR.

**Anti-cholinergic Drugs:** PAXIL IR has been reported to increase significantly the systemic bioavailability of procyclidine. Steady-state plasma levels of procyclidine (5 mg daily) were elevated by about 40% when 30 mg paroxetine was co-administered to steady-state. If anti-cholinergic effects are seen, the dose of procyclidine should be reduced.

**Antiretroviral:** Co-administration of fosamprenavir/ritonavir with paroxetine significantly decreased plasma levels of paroxetine (by ~60% in one study). Any dose adjustment should be guided by clinical effect (tolerability and efficacy).

**Phenobarbital:** Chronic daily dosing with phenobarbital (100 mg q.i.d. for 14 days) decreased the systemic availability of a single 30 mg dose of paroxetine in some subjects. The AUC and  $T_{1/2}$  of PAXIL IR were reduced by an average of 25 and 38% respectively compared to PAXIL IR administered alone. The effect of PAXIL CR or IR on phenobarbital pharmacokinetics was not studied. No initial PAXIL CR or IR dosage adjustment is considered necessary when co-administered with phenobarbital; any subsequent adjustment should be guided by clinical effect.

**Anticonvulsants:** In a limited number of patients with epilepsy on long-term treatment with anticonvulsants (carbamazepine 600-900 mg/day, n=6; phenytoin 250-400 mg/day, n=6; sodium valproate 300-2500 mg/day, n=8) the co-administration of PAXIL IR (30 mg/day for 10 days) had no significant effect on the plasma concentrations of these

anticonvulsants. In healthy volunteers, co-administration of paroxetine with phenytoin has been associated with decreased plasma levels of paroxetine and an increased incidence of adverse experiences. However, no initial dosage adjustment of PAXIL CR is considered necessary when the drug is to be co-administered with known drug metabolizing enzyme inducers (e.g. carbamazepine, phenytoin, sodium valproate) and any subsequent dosage adjustment should be guided by clinical effect. Co-administration of PAXIL CR with anticonvulsants may be associated with an increased incidence of adverse experiences.

**Antipsychotic Drugs/Neuroleptic Malignant Syndrome:** As with other SSRIs, PAXIL CR should be used with caution in patients already receiving antipsychotics/neuroleptics, since symptoms suggestive of Neuroleptic Malignant Syndrome cases have been reported with this combination (see WARNINGS AND PRECAUTIONS, Serotonin Syndrome/Neuroleptic Malignant Syndrome).

**Serotonergic Drugs:** Based on the mechanism of action of paroxetine and the potential for serotonin syndrome, caution is advised when PAXIL CR is co-administered with other drugs or agents that may affect the serotonergic neurotransmitter systems, such as tryptophan, triptans, serotonin reuptake inhibitors, lithium, fentanyl and its analogues, dextromethorphan, tramadol, tapentadol, meperidine, methadone and pentazocine or St. John's Wort. (see WARNINGS AND PRECAUTIONS, Serotonin Syndrome/Neuroleptic Malignant Syndrome). Concomitant use of PAXIL CR and MAO inhibitors (including linezolid, an antibiotic which is a reversible non-selective MAO inhibitor) is contraindicated (see CONTRAINDICATIONS).

**Drugs Affecting Platelet Function (e.g. NSAIDs, ASA and other anticoagulants):** Serotonin release by platelets plays an important role in hemostasis. Epidemiological studies of the case-control and cohort design that have demonstrated an association between use of psychotropic drugs that interfere with serotonin reuptake and the occurrence of upper gastrointestinal bleeding have also shown that concurrent use of an NSAID, ASA or other anticoagulants may potentiate the risk of bleeding.

Altered anticoagulant effects, including increased bleeding, have been reported when SSRIs are co-administered with warfarin. Patients receiving warfarin therapy should be carefully monitored when PAXIL CR is initiated or discontinued (see WARNINGS AND PRECAUTIONS, Hematologic, Abnormal Bleeding).

**Lithium:** In a study of depressed patients stabilized on lithium, no pharmacokinetic interaction between paroxetine and lithium was observed. However, due to the potential for serotonin syndrome, caution is advised when PAXIL CR is co-administered with lithium.

**Triptans:** There have been rare post-marketing reports describing patients with weakness, hyperreflexia, and incoordination following the use of a selective serotonin reuptake inhibitor (SSRI) and the 5HT<sub>1</sub> agonist, sumatriptan. If concomitant treatment with triptan and an SSRI (e.g. fluoxetine, fluvoxamine, paroxetine, sertraline) is clinically warranted, appropriate observation of the patient is advised. The possibility of such interactions should also be considered if other 5HT<sub>1</sub> agonists are to be used in combination with SSRIs (see WARNINGS AND PRECAUTIONS, Serotonin Syndrome/Neuroleptic Malignant Syndrome).

**Tryptophan:** Tryptophan can be metabolized to serotonin. As with other serotonin reuptake inhibitors, the use of PAXIL CR together with tryptophan may result in adverse reactions consisting primarily of headache, nausea, sweating and dizziness as well as serotonin syndrome. Consequently, concomitant use of PAXIL CR with tryptophan is not recommended (see WARNINGS AND PRECAUTIONS, Serotonin Syndrome/Neuroleptic Malignant Syndrome).

**CNS Drugs:** Experience in a limited number of healthy subjects has shown that PAXIL IR does not increase the sedation and drowsiness associated with haloperidol, amylbarbitone or oxazepam, when given in combination. Since the effects of concomitant administration of PAXIL CR or IR with neuroleptics have not been studied, the use of PAXIL CR with these drugs should be approached with caution.

**Diazepam:** A multiple dose study of the interaction between PAXIL IR and diazepam showed no alteration in the pharmacokinetics of PAXIL IR that would warrant changes in the dose of PAXIL CR for patients receiving both drugs. The effects of PAXIL IR or CR on the pharmacokinetics of diazepam were not evaluated.

**Cardiovascular Drugs:** Multiple dose treatment with PAXIL IR 30 mg/day has little or no effect on the steady-state pharmacokinetics of digoxin (0.25 mg q.d.) or propranolol (80 mg b.i.d.).

**Theophylline:** Reports of elevated theophylline levels associated with PAXIL treatment have been reported. While this interaction has not been formally studied, it is recommended that theophylline levels be monitored when these drugs are concurrently administered.

**Cimetidine:** Steady-state levels of PAXIL (30 mg daily) were elevated by about 50% when cimetidine (300 mg t.i.d.), a known drug metabolizing enzyme inhibitor, was co-administered to steady-state. Consideration should be given to using doses of PAXIL CR towards the lower end of the range when co-administered with known drug metabolizing enzyme inhibitors.

### **Drug-Food Interactions**

At steady-state, the bioavailability of 25 mg PAXIL CR is not affected by food.

### **Drug-Herb Interactions**

**St. John's Wort:** In common with other SSRI's, pharmacodynamic interactions between paroxetine and the herbal remedy St. John's Wort may occur and may result in an increase in undesirable effects.

### **Drug-Laboratory Interactions**

Interactions with laboratory tests have not been established.

## **DOSAGE AND ADMINISTRATION**

### **Dosing Considerations**

#### **General**

**PAXIL CR is not indicated for use in children under 18 years of age (see WARNINGS AND PRECAUTIONS, Potential Association with Behavioural and Emotional Changes, Including Self-Harm).**

Lower initial doses of PAXIL CR are recommended for elderly and debilitated patients, and patients with renal or hepatic impairment (see DOSAGE AND ADMINISTRATION, Special Patient Populations).

PAXIL CR should be administered as a single daily dose, usually in the morning, with or without food. Patients should be cautioned that the PAXIL CR tablet should not be chewed or crushed, and should be swallowed whole.

**Discontinuation of Treatment with PAXIL CR:** Symptoms associated with the discontinuation of PAXIL IR and PAXIL CR have been reported in clinical trials and post marketing. Patients should be monitored for these and other symptoms when discontinuing treatment, regardless of the indication for which PAXIL CR is being prescribed (see WARNINGS AND PRECAUTIONS, Discontinuation of Treatment With PAXIL CR and ADVERSE REACTIONS, Adverse Reactions Following Discontinuation of Treatment).

A gradual reduction in the dose rather than abrupt cessation is recommended whenever possible. If intolerable symptoms occur following a decrease in the dose or upon discontinuation of treatment, dose titration should be managed on the basis of the patient's clinical response (see ADVERSE REACTIONS).

## **Adults**

### **Depression**

***Usual Initial Dosage:*** The recommended initial dose is 25 mg/day. Patients were dosed in a range of 25 to 62.5 mg/day in the clinical trials demonstrating the effectiveness of PAXIL CR in the treatment of depression. As with all drugs effective in the treatment of depression, the full effect may be delayed. Some patients not responding to a 25 mg dose may benefit from dose increases, in 12.5 mg/day increments, up to a maximum of 62.5 mg/day. Dose changes should occur at intervals of at least 1 week.

***Maintenance Therapy:*** There is no body of evidence available to answer the question of how long a patient should continue to be treated with PAXIL CR for the symptoms of panic and depression. It is generally agreed that acute episodes of depression require several months or longer of sustained pharmacologic therapy. Whether the dose of an antidepressant needed to induce remission is identical to the dose needed to maintain and/or sustain euthymia is unknown.

Systematic evaluation of the efficacy of PAXIL IR has shown that efficacy is maintained for at least 6 months with doses that averaged about 30 mg, which corresponds to a 37.5 mg dose of PAXIL CR, based on relative bioavailability considerations.

### **Panic Disorder**

***Usual Initial Dosage:*** Patients should be started on 12.5 mg/day. Dose changes should occur in 12.5 mg/day increments and at intervals of at least 1 week. Patients were dosed in a range of 12.5 to 75 mg/day in the clinical trials demonstrating the effectiveness of PAXIL CR. The maximum dosage should not exceed 75 mg/day.

***Maintenance Therapy:*** Panic disorder is a chronic condition, and it is reasonable to consider continuation of treatment for a responding patient. Dosage adjustments should be made to maintain the patient on the lowest effective dosage, and patients should be periodically reassessed to determine the need for continued treatment.

### **Social Phobia (Social Anxiety Disorder)**

***Usual Initial Dosage:*** The recommended initial dose is 12.5 mg/day. In the clinical trial demonstrating the effectiveness of PAXIL CR in the treatment of social anxiety disorder, patients were dosed in a range of 12.5 to 37.5 mg/day. Some patients not responding to a 12.5 mg dose may benefit from dose increases, in 12.5 mg/day increments, up to a maximum of 37.5 mg/day. Dose changes should occur at intervals of at least 1 week.

***Maintenance Therapy:*** There is no body of evidence available to answer the question of how long the patient treated with PAXIL CR should remain on it. Although the efficacy of PAXIL CR beyond 12 weeks of dosing has not been demonstrated in controlled clinical trials, social anxiety disorder is recognized as a chronic condition, and it is reasonable to consider continuation of treatment for a responding patient. Dosage

adjustments should be made to maintain the patient on the lowest effective dosage, and patients should be periodically reassessed to determine the need for continued treatment.

### **Premenstrual Dysphoric Disorder**

**Usual Initial Dosage:** In clinical trials, both 12.5 mg/day and 25 mg/day were shown to be effective with continuous dosing, or intermittent luteal phase dosing.

The recommended dose is 12.5 mg/day limited to the luteal phase of the menstrual cycle, starting 14 days prior to the expected onset of menses, and terminating on the first day of menses. Some patients not responding to a 12.5 mg/day dose may benefit from a dose increase to 25 mg/day. Dose changes should occur at intervals of at least 1 week.

Continuous dosing of PAXIL CR, administered daily throughout the menstrual cycle may be considered if efficacy with luteal phase dosing is sub-optimal. Dose changes should occur at intervals of at least 1 week.

**Maintenance/Continuation Therapy:** The effectiveness of PAXIL CR in long-term use, that is, for more than 3 menstrual cycles has not been evaluated in controlled trials. Therefore, the physician who elects to use PAXIL CR for extended periods should periodically re-evaluate the long-term usefulness of the drug for the individual patient.

### **Special Patient Populations**

**Treatment of Pregnant Women:** Epidemiological studies of pregnancy outcomes following maternal exposure to antidepressants in the first trimester have reported an increase in the risk of congenital malformations, particularly cardiovascular (e.g. ventricular and atrial septal defects), associated with the use of paroxetine. If a patient becomes pregnant while taking PAXIL CR, she should be informed of the current estimate of risk to the fetus (see WARNINGS AND PRECAUTIONS, Special Populations) and consideration should be given to switching to other treatment options. Treatment with PAXIL CR should only be continued for an individual patient if the potential benefits outweigh the potential risks. For women who intend to become pregnant, or are in their first trimester of pregnancy, initiation of paroxetine should be considered only after other treatment options have been evaluated (see WARNINGS AND PRECAUTIONS, Special Populations for more details).

Post-marketing reports indicate that some neonates exposed to PAXIL CR, SSRIs, or other newer antidepressants late in the third trimester have developed complications requiring prolonged hospitalization, respiratory support, and tube feeding (see WARNINGS AND PRECAUTIONS, Special Populations). When treating pregnant women with PAXIL CR during the third trimester, the physician should carefully consider the potential risks and benefits of treatment. The physician may consider tapering PAXIL CR in the third trimester.

**Geriatrics (> 65 years) or Debilitated:** Administration of PAXIL CR to the elderly is associated with increased plasma levels and prolongation of the elimination half-life relative to younger adults (See ACTION AND CLINICAL PHARMACOLOGY). The



recommended initial dose of PAXIL CR is 12.5 mg/day for elderly patients and debilitated patients. The dose may be increased, if indicated, up to a maximum of 50 mg/day.

***Pediatrics:*** PAXIL CR is not indicated for use in children under 18 years of age (see INDICATION and WARNINGS AND PRECAUTIONS, Potential Association with Behavioural and Emotional Changes, Including Self-Harm).

***Renal/Hepatic Impairment:*** PAXIL CR should be used with caution in patients with renal or hepatic impairment. The recommended initial dose is 12.5 mg/day in patients with clinically significant renal or hepatic impairment. A maximum dose of 50 mg/day should not be exceeded (see WARNINGS AND PRECAUTIONS; ACTION AND CLINICAL PHARMACOLOGY).

## OVERDOSAGE

The largest known ingestion from which a patient has recovered is 2,000 mg. The smallest known dose of paroxetine alone associated with a fatal outcome is approximately 400 mg.

### Symptoms of Overdosage

**The most commonly reported adverse events subsequent to paroxetine-only overdose include:** somnolence, nausea, tremor, dizziness, vomiting, diarrhea, agitation, aggression, anxiety, confused state, headache, fatigue, insomnia, tachycardia, hyperhidrosis, mydriasis, convulsion, paresthesia, serotonin syndrome, fever, blood pressure changes, involuntary muscle contraction and loss of consciousness. It should be noted that in some cases, patients may have consumed alcohol in addition to taking an overdose of paroxetine. *Some of these symptoms may also be seen with clinical use.*

Events such as coma and ECG changes have also been reported.

### Treatment of Overdosage

The physician should consider contacting a poison control centre for additional information on the treatment of any overdose.

No specific antidote is known. Treatment should consist of those general measures employed in the management of overdose with any antidepressant. Establish and maintain an airway; ensure adequate oxygenation and ventilation.

Induction of emesis is not recommended. Due to the large volume of distribution of PAXIL CR, forced diuresis, dialysis, hemoperfusion and exchange transfusion are unlikely to be of benefit.

Supportive care with frequent monitoring of vital signs and careful observation is indicated. An ECG should be taken and monitoring of cardiac function instituted if there

is any evidence of abnormality. Patient management should be as clinically indicated, or as recommended by the national poisons centre, where available.

In managing overdose, consider the possibility of multiple drug involvement.

A specific caution involves patients taking or recently having taken PAXIL CR who might ingest, by accident or intent, excessive quantities of a tricyclic antidepressant. In such a case, accumulation of the parent tricyclic and its active metabolite may increase the possibility of clinically significant sequelae and extend the time needed for close medical observation.

For management of a suspected drug overdose, contact your regional Poison Control Centre.

## **ACTION AND CLINICAL PHARMACOLOGY**

### **Mechanism of Action**

Paroxetine is a potent and selective serotonin (5-hydroxytryptamine, 5-HT) reuptake inhibitor (SSRI). This activity of the drug on brain neurons is thought to be responsible for its antidepressant and anxiolytic action in the treatment of depression, panic disorder and social anxiety disorder.

Paroxetine is a phenylpiperidine derivative which is chemically unrelated to the tricyclic or tetracyclic antidepressants. In receptor binding studies, paroxetine did not exhibit significant affinity for the adrenergic ( $\alpha_1$ ,  $\alpha_2$ ,  $\beta$ ), dopaminergic, serotonergic (5HT<sub>1</sub>, 5HT<sub>2</sub>), or histaminergic receptors of rat brain membrane. A weak affinity for the muscarinic acetylcholine receptor was evident. The predominant metabolites of paroxetine are essentially inactive as 5-HT reuptake inhibitors.

### **Pharmacokinetics**

PAXIL CR tablets contain a degradable polymeric matrix (Geomatrix™, a trademark of Jago Pharma, Muttenz, Switzerland) designed to control the dissolution rate of paroxetine over a period of approximately 4 to 5 hours. In addition to controlling the rate of drug release *in vivo*, an enteric coat delays the start of drug release until PAXIL CR tablets have left the stomach.

**Absorption:** Paroxetine hydrochloride is completely absorbed after oral dosing of a solution of the hydrochloride salt. In a study in which normal male and female subjects (n=23) received single oral doses of PAXIL CR at four dosage strengths (12.5, 25, 37.5 and 50 mg), paroxetine C<sub>max</sub> and AUC<sub>0-inf</sub> increased disproportionately with dose (as seen also with immediate-release formulations). Mean C<sub>max</sub> and AUC<sub>0-inf</sub> values at these doses were 2.0, 5.5, 9.0, and 12.5 ng/mL, and 121, 261, 338, and 540 ng/hr/mL, respectively. T<sub>max</sub> was observed typically between 6 and 10 hours post-dose, reflecting a reduction in absorption rate compared with immediate-release formulations (IR). The mean

elimination half-life of paroxetine was 15 to 20 hours throughout this range of single PAXIL CR doses. The bioavailability of 25 mg PAXIL CR is not affected by food.

During repeated administration of PAXIL CR (25 mg once daily), steady-state was reached within two weeks (i.e. comparable to immediate-release formulations). In a repeat-dose study in which normal male and female subjects (n=23) received PAXIL CR (25 mg daily), mean steady-state  $C_{max}$ ,  $C_{min}$  and  $AUC_{0-24}$  values were 30 ng/mL, 20 ng/mL and 550 ng/hr./mL, respectively.

Based on studies using IR formulations, steady-state drug exposure based on  $AUC_{0-24}$  was several-fold greater than would have been predicted from single-dose data. The excess accumulation is a consequence of the fact that one of the enzymes that metabolizes paroxetine is readily saturable.

In steady-state dose proportionality studies involving elderly and nonelderly patients, at doses of the IR formulation of 20 to 40 mg daily for the elderly and 20 to 50 mg daily for the nonelderly, some nonlinearity was observed in both populations, again reflecting a saturable metabolic pathway. In comparison to  $C_{min}$  values after 20 mg daily, values after 40 mg daily were only about 2 to 3 times greater than doubled.

In healthy young volunteers receiving a 20 mg daily dose of paroxetine IR for 15 days, the mean maximal plasma concentration was 41 ng/mL at steady-state (see Table 8). Peak plasma levels generally occurred within 3 to 7 hours.

**Distribution:** At therapeutic concentrations, the plasma protein binding of paroxetine is approximately 95%.

**Metabolism:** Paroxetine is subject to a biphasic process of metabolic elimination which involves presystemic (first-pass) and systemic pathways. First-pass metabolism is extensive, but may be partially saturable, accounting for the increased bioavailability observed with multiple dosing. The metabolism of paroxetine is accomplished in part by cytochrome P450 (IID<sub>6</sub>). Saturation of this enzyme at clinical doses appears to account for the nonlinearity of paroxetine kinetics with increasing dose and increasing duration of treatment. The role of this enzyme in paroxetine metabolism also suggests potential drug-drug interactions (see DRUG INTERACTIONS). The majority of the dose appears to be oxidized to a catechol intermediate which is converted to highly polar glucuronide and sulphate metabolites through methylation and conjugation reactions. The glucuronide and sulphate conjugates of paroxetine are > 10,000 and 3,000 times less potent, respectively, than the parent compound as inhibitors of 5-HT reuptake in rat brain synaptosomes.

**Excretion:** Approximately 64% of an administered dose of paroxetine is eliminated by the kidneys and 36% in the feces. Less than 2% of the dose is recovered in the form of the parent compound.

## **Special Populations and Conditions**

**Geriatrics:** In elderly subjects, increased steady-state plasma concentrations and prolongation of the elimination half life were observed relative to younger adult controls (Table 8). Elderly patients should, therefore, be initiated and maintained at the lowest daily dosage of paroxetine which is associated with clinical efficacy (see DOSAGE AND ADMINISTRATION).

**Hepatic Insufficiency:** The results from a multiple dose pharmacokinetic study with paroxetine IR, in subjects with severe hepatic dysfunction, suggest that the clearance of paroxetine is markedly reduced in this patient group (see Table 8). As the elimination of paroxetine is dependent upon extensive hepatic metabolism, its use in patients with hepatic impairment should be undertaken with caution (see DOSAGE AND ADMINISTRATION, Special Patient Populations).

**Renal Insufficiency:** In a single dose pharmacokinetic study in patients with mild to severe renal impairment, plasma levels of paroxetine tended to increase with deteriorating renal function (see Table 9).

As multiple-dose pharmacokinetic studies have not been performed in patients with renal disease, paroxetine should be used with caution in such patients (see DOSAGE AND ADMINISTRATION, Special Patient Populations).

**Table 8      Steady-state pharmacokinetics of paroxetine IR after doses of 20 mg daily (mean and range)**

	<b>Young Healthy Subjects [n=22]</b>	<b>Elderly Healthy Subjects [n=22]</b>	<b>Hepatically* Impaired Subjects [n=10]</b>
$C_{max}$ (ss) (ng/mL)	41 (12-90)	87 (18-154)	87 (11-147)
$T_{max}$ (ss) (hours)	5.0 (3-7)	5.0 (1-10)	6.4 (2-11)
$C_{min}$ (ss) (ng/mL)	21 (4-51)	58 (9-127)	66 (7-128)
AUC (ss) (ng·h/mL)	660 (179-1436)	1580 (221-3286)	1720 (194-3283)
$T_{1/2}$ (hour)	19 (8-43)	31 (13-92)	66 (17-152)

\*Galactose elimination capacity 30-70% of normal.

**Table 9 Pharmacokinetics of paroxetine IR after a single 30 mg dose in normal subjects and those with renal impairment**

	<sup>a</sup> Renally Impaired Severe [n=6]	<sup>b</sup> Renally Impaired Moderate [n=6]	<sup>c</sup> Healthy young subjects [n=6]
C <sub>max</sub> (ng/mL)	46.2 (35.9-56.7)	36 (3.6-59.4)	19.8 (1.4-54.8)
T <sub>max</sub> (hour)	6.5 (4.0-11.0)	4.8 (1.5-9.0)	4.3 (1-7)
AUC <sub>4</sub> (ng·h/mL)	2046 (605-3695)	1053 (48-2087)	574 (21-2196)
T <sub>1/2</sub> (hour)	29.7 (10.9-54.8)	18.3 (11.2-32.0)	17.3 (9.6-25.1)

a Creatinine clearance = 13-27 mL/min

b Creatinine clearance = 32-46 mL/min

c Creatinine clearance > 100 mL/min

Abbreviations:

C<sub>max</sub> = maximum plasma concentration; T<sub>max</sub> = time to reach C<sub>max</sub>

AUC<sub>∞</sub> = Area under the plasma concentration time curve at infinity.

T<sub>1/2</sub> = terminal elimination half-life

## STORAGE AND STABILITY

Store between 15 and 25°C.

## DOSAGE FORMS, COMPOSITION AND PACKAGING

PAXIL CR is available as round and biconvex, enteric, film-coated, controlled-release tablet containing paroxetine hydrochloride equivalent to 12.5 mg (yellow tablets), 25 mg (pink tablets) and 37.5\* mg (blue tablets), paroxetine free base. The tablets have GSK engraved on one side and strength engraved on the other side. Available in bottles of 30 tablets.

### Composition

PAXIL CR tablets contain either 12.5 mg, 25 mg or 37.5\* mg of paroxetine, as paroxetine hydrochloride. The tablets also contain the following non-medicinal ingredients: colloidal silicon dioxide, glyceryl behenate, hydroxypropyl methylcellulose, lactose monohydrate, magnesium stearate, methacrylic acid copolymer type C, polyethylene glycol, polysorbate 80, polyvinylpyrrolidinone, sodium lauryl sulphate, talc, titanium dioxide, triethyl citrate. PAXIL CR 12.5 mg tablets also contain D&C yellow No.10 aluminium lake, FD&C yellow No. 6 aluminium lake, and yellow ferric oxide. PAXIL CR 25 mg tablets also contain D&C red No. 30 aluminium lake and red ferric oxide. PAXIL CR 37.5\* mg tablets also contain FD&C blue No. 2 and yellow ferric oxide.

\* 37.5 mg tablets are not available in Canada

## PART II: SCIENTIFIC INFORMATION

### PHARMACEUTICAL INFORMATION

#### Drug Substance

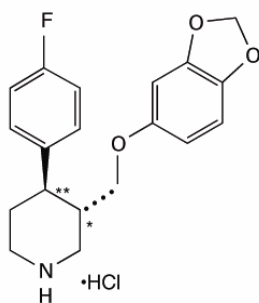
Proper Name: Paroxetine hydrochloride

Chemical Name: (-)-trans-4R-(4'-fluorophenyl)-3S-(3',4'-methylene-dioxymethyl)-piperidine hydrochloride hemihydrate.

Molecular Formula:  $C_{19}H_{20}NO_3F \cdot HCl$

Molecular Mass: 374.8 (as hemihydrate salt)  
329.4 (as free base)

Structural Formula:



Physicochemical properties:

*Description:* a white to off-white solid

*Melting point:* 120-138°C

*pKa and pH Values:*

It is not possible to measure directly the pKa of paroxetine in water owing to the aliphatic nature of the piperidine ring system and the low solubility of paroxetine base.

Measurements in 50% aqueous dimethyl sulphoxide indicate an aqueous pKa of 9.90 compared to a calculated value of 9.84.

The pH of a saturated solution of paroxetine hydrochloride is 5.7 and a solution containing 2 mg/mL of paroxetine hydrochloride is 6.3.

### *Oil-Water Coefficient of Partition:*

The apparent partition coefficient of paroxetine hydrochloride in the octanol-water system (P<sub>oct/water</sub>) is 3.38 (log P=0.53).

The partition coefficient of paroxetine base between octanol-water determined using a solution of paroxetine hydrochloride in octanol and an aqueous phase of sodium hydroxide solution (1M) is 222 (log P=2.35).

Paroxetine hydrochloride is slightly soluble in water (4.9 mg pure free base/mL).

## **CLINICAL TRIALS**

### **Depression**

The efficacy of PAXIL CR controlled release tablets as a treatment for depression has been established in two 12 week, flexible dose, placebo-controlled studies of patients with DSM-IV Major Depressive Disorder. One study included patients in the age range 18-65 years, and a second study included elderly patients, ranging in age from 60-88. In both studies, PAXIL CR was shown to be significantly more effective than placebo in treating depression as measured by the following: Hamilton Depression Rating Scale Total Score (HDRS), the Hamilton depressed mood item, and the Clinical Global Impression (CGI)-Severity of Illness score.

A study of outpatients with recurrent major depressive disorder who had responded to immediate-release paroxetine tablets (HDRS total score < 8) during an initial 8 week open treatment phase and were then randomized to continuation on immediate-release paroxetine tablets or placebo for 1 year demonstrated that a significantly lower proportion of patients treated with PAXIL (15%) compared to placebo (39%) met criteria for partial relapse<sup>1</sup>. Criteria for full relapse<sup>2</sup> were met by a significantly lower percentage of PAXIL treated patients (12%) compared to placebo treated patients (28%). Effectiveness was similar for male and female patients.

### **Panic Disorder**

The effectiveness of PAXIL CR in the treatment of panic disorder was evaluated in three 10-week, multicentre, flexible dose studies (Studies 1, 2, and 3) comparing paroxetine controlled release (12.5 to 75 mg daily) to placebo in adult outpatients who had panic disorder (DSM-IV), with or without agoraphobia. These trials were assessed on the basis of their outcomes on three variables: (1) the proportions of patients free of full panic attacks at endpoint; (2) change from baseline to endpoint in the median number of full panic attacks; and (3) change from baseline to endpoint in the median Clinical Global

---

<sup>1</sup> Partial relapse was characterized by requirement for additional antidepressant medication and fulfillment of DSM III-R criteria for major depressive episode

<sup>2</sup> Full relapse was characterized by requirement for additional antidepressant treatment, fulfillment of DSM III-R criteria for major depressive episode, deterioration in depressive symptoms for at least 1 week, increase in CGI-Severity of Illness score by  $\geq 2$  points and CGI-Severity of Illness score of  $\geq 4$  (least moderately ill).

Impression Severity score. For Studies 1 and 2, PAXIL CR was consistently superior to placebo on two of these three variables. Study 3 failed to consistently demonstrate a significant difference between PAXIL CR and placebo on any of these variables.

For all three studies, the mean PAXIL CR dose for completers at endpoint was approximately 50 mg/day. Subgroup analyses did not indicate that there were any differences in treatment outcomes as a function of age or gender.

### **Social Anxiety Disorder**

The effectiveness of PAXIL CR in the treatment of social anxiety disorder was demonstrated in a 12 week, multicentre, double-blind, flexible dose, placebo-controlled study of adult outpatients with a primary diagnosis of social anxiety disorder (DSM-IV). In the study, the effectiveness of PAXIL CR (12.5 to 37.5 mg daily) compared to placebo was evaluated on the basis of (1) change from baseline in the Liebowitz Social Anxiety Scale (LSAS) total score and (2) the proportion of responders who scored 1 or 2 (very much improved or much improved) on the Clinical Global Impression (CGI) Global Improvement score.

PAXIL CR demonstrated statistically significant superiority over placebo on both the LSAS total score and the CGI Improvement responder criterion. For patients who completed the trial, 64% of patients treated with PAXIL CR compared to 34.7% of patients treated with placebo were CGI Improvement responders.

Subgroup analyses did not indicate that there were any differences in treatment outcomes as a function of gender. Subgroup analyses of studies utilizing the immediate-release formulation of paroxetine generally did not indicate differences in treatment outcomes as a function of age, race or gender.

### **Premenstrual Dysphoric Disorder (PMDD)**

The effectiveness of PAXIL CR for the treatment for Premenstrual Dysphoric Disorder (PMDD) has been assessed in 4 placebo-controlled trials. Patients in these trials met DSM-IV criteria for PMDD. In 3 studies, patients (n=1,030) were treated with PAXIL CR 12.5 or 25 mg/day, or placebo, continuously throughout the menstrual cycle for a period of 3 months. In the fourth study, patients (n=366) were treated for the 2 weeks prior to the onset of menses (luteal phase dosing, also known as intermittent dosing) with PAXIL CR 12.5 or 25 mg/day, or placebo, for a period of 3 months. The Visual Analogue Scale (VAS)-Mood score which consists of the mean VAS scores for the 4 core PMDD symptoms, irritability, tension, depressed mood and affective lability, was the primary efficacy measure. PAXIL CR 25 mg/day as continuous dosing and as luteal phase dosing were significantly more effective than placebo as measured by change from baseline luteal phase VAS-Mood score in all 4 studies. PAXIL CR 12.5 mg/day was significantly more effective than placebo as measured by change from baseline luteal phase VAS-Mood score in 2 of the 3 continuous studies and in the one luteal phase study.

There is insufficient information to determine the effect of race or age on outcome in these studies.



Patients on systemic hormonal contraceptives were excluded from these trials. Therefore, the efficacy of PAXIL CR in combination with systemic (including oral) hormonal contraceptives for the treatment of PMDD is unknown.

## DETAILED PHARMACOLOGY

### Animal Pharmacology

***In Vitro:*** Paroxetine showed a high potency for the inhibition of 5-HT reuptake in rat hypothalamic synaptosomes ( $K_i=1.1\text{nM}$ ), but exerted relatively weak effects upon noradrenaline reuptake ( $K_i=350\text{nM}$ ). The predominant metabolites of paroxetine, a sulphate and a glucuronide conjugate, were essentially inactive as 5-HT reuptake inhibitors. Paroxetine has a low affinity for muscarinic cholinergic receptors ( $K_i$  of 89 nM for displacement of [ $^3\text{H}$ ]quinuclidinyl benzilate). Animal studies have indicated only weak anticholinergic properties.

Radioligand binding techniques in rat brain, *in vitro*, have indicated that paroxetine has little affinity for  $\alpha_1$ ,  $\alpha_2$  and  $\beta$ -adrenoceptors, dopamine ( $D_2$ ), 5-HT $_1$ -like, 5-HT $_2$  and histamine ( $H_1$ ) receptors at concentrations below 1  $\mu\text{M}$ . This lack of interaction with post-synaptic receptors *in vitro* is substantiated by *in vivo* studies which demonstrate a lack of CNS depressant and hypotensive properties.

***In Vivo:*** In mice, paroxetine ( $\text{ED}_{50}=0.4\text{ mg/kg p.o.}$ ) was associated with potent and prolonged potentiation of the hypermotility induced by the 5-HT precursor, 5-hydroxytryptophan. Similarly, the anticonvulsant effects of 5-hydroxytryptophan in a mouse electroshock model were potentiated by paroxetine ( $\text{ED}_{50}=0.4\text{ mg/kg p.o.}$ ). In rats, paroxetine ( $\text{ED}_{50}=0.8\text{ mg/kg p.o.}$ ) inhibited the hypermotility induced by p-chloroamphetamine, an agent which depletes neuronal 5-HT stores.

Paroxetine, 1 mg/kg i.p. in conscious rats with chronically implanted cortical electrodes, produced essentially no changes in the power spectrum and frequency analysis of the EEG.

Electrophysiological measures have demonstrated that paroxetine has a vigilance increasing activity in animals. Oral doses of paroxetine 0.32 to 18 mg/kg to rats lengthened the waking period and shortened the slow-wave and paradoxical sleep periods in a dose-dependent fashion. As with other selective 5-HT uptake inhibitors, paroxetine, at a dose of 5 mg/kg i.p., causes symptoms of excessive 5-HT receptor stimulation when administered to rats previously given monoamine oxidase (MAO) inhibitors such as tranlycypromine or phenelzine, or the 5-HT precursor L-tryptophan.

Behavioural and EEG studies indicate that paroxetine is weakly activating at doses above those generally required to inhibit 5-HT reuptake. The activating properties are not "amphetamine-like" in nature. In rats trained to discriminate d-amphetamine, 1 mg/kg i.p., from saline, no generalization to amphetamine was observed after administration of paroxetine (0.3, 1, 3 or 10 mg/kg i.p.). Paroxetine caused seizures in mice at a lethal dose of 300 mg/kg p.o. At a dose of 50 mg/kg p.o., paroxetine lowered the threshold for electroshock-induced seizures in mice.

Animal studies indicate that paroxetine is well tolerated by the cardiovascular system. When the cardiovascular effects of paroxetine and amitriptyline were compared in the conscious rabbit and anaesthetized cat, intravenous doses of paroxetine approximately 2 to 4 times higher (on a mg/kg basis) than those of amitriptyline were required to produce significant changes in blood pressure, heart rate and electrocardiographic parameters. Similarly, in the pentobarbital anaesthetized dog, i.v. imipramine, amitriptyline and clomipramine (in doses of 10 mg/kg) caused severe atrioventricular block and ventricular arrhythmias, while equivalent doses of paroxetine resulted in only slight prolongation of the PQ interval. In addition, low doses (0.3 to 1 mg/kg) of the tricyclic antidepressants caused marked tachycardia, whereas paroxetine in doses up to 10 mg/kg had no effect on heart rate.

Studies in the spontaneous hypertensive rat indicate that, in contrast to antidepressants which inhibit the uptake of noradrenaline, paroxetine at 5 mg/kg i.v. has a much reduced propensity to inhibit the antihypertensive effects of guanethidine.

5-HT is transported into blood platelets and central neurons by a similar active uptake transporter mechanism in the cell membrane. Thus, in common with other selective 5-HT reuptake inhibitors, administration of paroxetine results in depletion of 5-HT from platelets. This has been reported after repeated daily administration of paroxetine at doses of 0.1, 1 and 10 mg/kg i.p. in mice and rats, 1-7.5 mg/kg p.o. in monkeys and 10-50 mg orally to healthy human volunteers. Similarly, whole blood 5-HT levels were shown to be depleted in depressed patients after paroxetine administration.

### **Human Pharmacology**

Paroxetine 30 mg administered in single doses to healthy non-depressed volunteers did not impair psychomotor function which was measured by psychomotor tasks such as Morse tapping and motor manipulation, assessment of subjective perception and general assessment of arousal.

Paroxetine at doses of up to 40 mg daily produces no clinically significant changes in blood pressure, heart rate or ECG after administration to healthy subjects.

## **TOXICOLOGY**

General toxicity studies have been conducted in rhesus monkeys and rats, in both of which the metabolic pathway for paroxetine is the same as in man.

### **Acute Toxicity**

In relation to the clinical dose, the acute LD50 of paroxetine is very high in both mice and rats (approximately 350 mg/kg).

### **Long-Term Toxicity**

The no-toxic effect levels in the rhesus monkeys and rats were 4-10 times and 6-15 times the recommended range of clinical doses respectively. At higher doses (40 mg/kg for 3 months and 25 mg/kg for 12 months), lipidosis was observed in several tissues of rats (lungs, mesenteric lymph nodes, epididymides, retinal tissues - the latter by electron microscopy only). As paroxetine is a lipophilic amine with both hydrophobic and hydrophilic moieties, it may accumulate in lysosomes leading to an impairment of lipid catabolism and, hence, the accumulation of lipids within the lysosomes. It should be noted that the slight degree of lipidosis seen in the rat was restricted to doses and plasma levels much higher than those observed in man. In a clinical study investigating lamellated inclusion bodies in peripheral white blood cells during long-term therapy, no difference between placebo and paroxetine could be detected.

### **Carcinogenicity**

No carcinogenic potential was detected in rat (dose levels of 1, 5 and 20 mg/kg/day) and mouse (dose levels of 1, 5 and 25 mg/kg/day) life-span studies. A non dose-related increase in malignant liver cell tumours occurred in male mice at 1 and 5 mg/kg/day which was statistically significant at 5 mg/kg/day. There was no increase at 25 mg/kg/day or in female mice and the incidence was within the historical control range.

### **Reproduction and Impairment of Fertility Studies**

5-Hydroxytryptamine and compounds modulating this amine are known to affect reproductive function in animals and at high dose levels cause marked overt toxicity. Paroxetine at 15 and 50 mg/kg (hydrochloride salt) has been shown to impair reproductive function in rats.

### **Teratology Studies**

In male rats, chronic administration of a 50 mg/kg dose has been associated with granulomatous reactions in the epididymides accompanied by atrophy and degeneration of the seminiferous tubules. There were no biologically significant effects on fertility of female rats but corpora lutea count was slightly reduced and preimplantation loss slightly increased at 50 mg/kg in association with marked maternal toxicity.

Reproduction studies were performed in rats and rabbits at doses up to 42 and 5 times the maximum recommended daily human dose (60 mg) on a mg/kg basis. These are 8.3 (rat) and 1.7 (rabbit) times the maximum recommended human dose on a mg/m<sup>2</sup> basis. These studies have revealed no evidence of teratogenic effects or of selective toxicity to the embryo.

### **Immunotoxicity Studies**

Specific studies have demonstrated that paroxetine is unlikely to possess the potential for immunotoxicity.

Serum samples were obtained from depressed patients who had received 30 mg of paroxetine daily for between six and twelve months, from groups of rats on a repeat dose toxicity study in which daily doses of 1, 5 and 25 mg/kg of paroxetine were administered for 52 weeks, from guinea pigs epicutaneously exposed (topically under an occlusive patch) to paroxetine and from New Zealand White (NZW) rabbits parenterally (i.m. and s.c.) injected with paroxetine in Freund's adjuvant. In addition as a positive control, sera were obtained from NZW rabbits which had been immunized by i.m. and s.c. injections of Freund's adjuvant emulsions containing paroxetine chemically conjugated to bovine gamma globulin (BGG).

Serum antibody levels were assessed by enzyme- or radio-immunoassays (ELISA or RIA). No anti-paroxetine antibody activity was detected in serum samples from patients, from rats in the toxicity study, from guinea pigs epicutaneously exposed to paroxetine, or from rabbits parenterally injected with paroxetine. Serum anti-paroxetine antibody was detected in rabbits immunized with Freund's adjuvant emulsions containing paroxetine coupled with BGG, verifying that the RIA system employed was capable of detecting antibodies directed against paroxetine.

Paroxetine also did not induce contact sensitivity reactions in guinea pigs following epicutaneous exposure.

## REFERENCES

1. Anon. Paroxetine Aropax, Seroxat. *Drugs Future*. 1991; 16/2 (184).
2. Bailey DL & Le Melleo JM. Effects of selective serotonin reuptake inhibitors on cholesterol levels in patients with panic disorder. *J Clin Psychopharmacol*. 2003 Jun; 23: 317-319.
3. Boyer WF, Blumhardt CL. The safety profile of paroxetine. *J Clin Psychiatry*. 1992; 53 Suppl: 61-66.
4. Cain CR, Hamilton TC, Norton J, Petersen EN, Poyser RH, Thormahlen D. Relative lack of cardiotoxicity of paroxetine in animal models. *Acta Psychiatr Scand Suppl*. 1989; 350: 27-30.
5. Carillo JA, Ramos SI, Herraiz AG, Llerena A, Agundez JA, Berez R et al. Pharmacokinetic interaction of fluvoxamine and thioridazine in schizophrenic patients. *J Clin Psychopharmacol*. 1999; 19(6): 494-499.
6. Chambers CDE, Hernandez-Diaz S, Van Marter LJ, Werler MM, Louik C, Jones KL, et al. Selective serotonin-reuptake inhibitors and risk of persistent pulmonary hypertension of the newborn. *New Engl J of Med*. 2006 Feb 9; 354(6): 579-587.
7. Chambers CD, Johnson KA, Dick LM, Felix RJ, Jones KL. . Birth outcomes in pregnant women taking fluoxetine. *New Engl J Med*. 1996; 1010-5.
8. Claghorn JL, The safety and efficacy of paroxetine compared with placebo in a double-blind trial of depressed outpatients. *J Clin Psychiatry*. 1992; 53 Suppl: 33-35.
9. Claghorn JL. Paroxetine: Long-Term Efficacy and Tolerability. *Proc 5th World Congr Biol Psychiatr Florence*. 1991 12-13.
10. Cohen, L.S, et al. Paroxetine Controlled Release for Premenstrual Dysphoric Disorder: A Double-Blind, Placebo-Controlled Trial. *Psychosomatic Medicine*. 2004; 66: 707-713.
11. Cohn JB, Wilcox CS. Paroxetine in major depression: a double-blind trial with imipramine and placebo. *J Clin Psychiatry*. 1992; 53 Suppl: 52-56.
12. Den Boer JA, Westenberg HG, Kamerbeek WD, Verhoeven W M, Kahn RS. Effect of serotonin uptake inhibition in anxiety disorders; a double-blind comparison of clomipramine and fluvoxamine. *Int Clin Psychopharmacol*. 1987; 2(1): 21-32.

13. Dewar KM, Reader TA, Grondin L, Descarries L. [3H]paroxetine binding and serotonin content of rat and rabbit cortical areas, hippocampus, neostriatum, ventral mesencephalic tegmentum and midbrain raphe nuclei region. *Synapse*. 1991; 9(1): 14-26.
14. DuMouchel W. Bayesian data mining in large frequency tables, with an application to the FDA spontaneous reporting. *Am Statistician*. 1999; 53: 177-202.
15. DuMouchel W, Pregibon D. Empirical Bayes screening for multi-item associations. *Proceedings of the seventh ACM SIGKDD international conference on Knowledge discovery and data mining*. 2001, 67-76.
16. Dunbar GC, Cohn JB, Fabre LF, Feighner JP, Fieve RR, Mendels J, et al. A comparison of paroxetine, imipramine and placebo in depressed out-patients. *Br J Psychiatry*. 1991; 159: 394-398.
17. Dunbar GC, Mewett S. Evaluation of Suicidal Thoughts and Acts with Paroxetine. *Proc 5th World Congr Biol Psychiatr Florence*. 1991: 36-37.
18. Dunbar GC, Stoker MJ. Paroxetine in the Treatment of Melancholic and Severely Depressed Hospitalised Patients. *Euro Neuropsychopharmacol. Abstracts of Ivth Congress of European College of Neuropsychopharmacology, Monaco*. 6-9 October 1991; 1(3): 64.
19. Dunbar GC. Paroxetine - An Effective Antidepressant with Impressive Safety Profile. *J Psychopharmacol*. 1990; 4(4): 257.
20. Dunner DL, Cohn JB, Walshe T, III Cohn CK, Feighner JP, Fieve RR et al. Two combined, multicentre double-blind studies of paroxetine and doxepin in geriatric patients with major depression. *J Clin Psychiatry*. 1992; 53 Suppl: 57-60.
21. Dunner DL, Dunbar GC. Optimal dose regimen for paroxetine. *J Clin Psychiatry*. 1992; 53 Suppl: 21-26.
22. Eric L, Petrovic D, Loga S, Kobal M, Jakovljevic M, Mewett S. A Prospective, Double-Blind, Comparative, Multicentre Study of Paroxetine and Placebo in Preventing Recurrent Major Depressive Episodes. *Proc 5th World Congr Biol Psychiatr Florence*. 1991: 10-11.
23. Fabre LF. A 6-week, double-blind trial of paroxetine, imipramine and placebo in depressed outpatients. *J Clin Psychiatry*. 1992; 53 Suppl: 40-43.
24. Feighner JP, Boyer WF. Paroxetine in the treatment of depression: a comparison with imipramine and placebo. *J Clin Psychiatry*. 1992; 53 Suppl: 44-47.

25. Golden RN, Nemeroff CB, McSorley P, Pitts CD, Dube EM. Efficacy and tolerability of controlled release and immediate-release paroxetine in the treatment of depression. *J Clin Psychiatry*. 2002 Jul; 63(7): 577-584.
26. Gorman JM, Liebowitz M R, Fyer AJ, Goetz D, Campeas RB, Fyer MR et al. An open trial of fluoxetine in the treatment of panic attacks. *J of Clin Psychopharmacol*. 1987; 7(5): 329-332.
27. Greenough A, Khatriwal B. Pulmonary hypertension in the newborn. *Paediatr Respir Rev*. 2005; 111-116.
28. Hartigan-Go K, Bateman DN, Nyberg G, Martensson E, Thomas SH. Concentration-related pharmacodynamic effects of thioridazine and its metabolites in humans. *Clin Pharmacol Ther*. 1996; 60(5): 543-553.
29. Hindmarch I, Harrison C. The effects of paroxetine and other antidepressants in combination with alcohol on psychomotor activity related to car driving. *Acta Psychiatr Scand*. 1989; 350: 45.
30. Hutchinson DR, Tong S, Moon CAL, Vince M, Clarke A . A Double Blind Study in General Practice to Compare the Efficacy and Tolerability of Paroxetine and Amitriptyline in Depressed Elderly Patients. *Br J Clin Res*. 1991; 2:43-57.
31. Johnson AM. An overview of the animal pharmacology of paroxetine. *Acta Psychiatr Scand*. 1989; Suppl350:14-20.
32. Källén B. Neonate characteristics after maternal use of antidepressants in late pregnancy. *Arch of Pediatr & Adolesc Med*. 2004; 312-316.
33. Kennet GA, Lightowler S, De Biasi V, Stevens NC. and Blackburn, TP.m-CPP-induced mouth movements, a model of OCD? *Neuropsychopharmacol*. 1994; 10: 174-178.
34. Kennet GA, Lightowler S, Murphy O, De B, V, Stevens N, Tulloch IF et al. Chronic Treatment with Paroxetine and Fluoxetine, But Not Desipramine, Desensitizes 5-HT<sub>2C</sub> Receptor Function. *Br J Pharmacol*. 1994; 112(Proc Suppl): 643.
35. Kerr JS, Sherwood N, Hindmarch I. The Comparative Psychopharmacology of the 5-HT Reuptake Inhibitors. *Hum Psychopharmacol*. 1991; 6(4): 313-317.
36. Kessler RC, McGonagle KA, Zhao S, Nelson CB, Hughes M, Eshleman S, et al. Lifetime and 12-month prevalence of DSM-III-R psychiatric disorders in the United States. Results from the National Comorbidity Survey. *Arch Gen Psychiatry*. 1994; 51(1): 8-19.

37. Kiev A. A double-blind, placebo-controlled study of paroxetine in depressed outpatients. *J Clin Psychiatry*. 1992; 53 Suppl: 27-29.
38. Kim EJ & Yu BH. Increased cholesterol levels after paroxetine treatment in patients with panic disorder. *J Clin Psychopharmacol*. 2005; 597-599.
39. Kuhs H, Rudolf GA. Cardiovascular effects of paroxetine. *Psychopharmacology (Berl)*. 1990; 102(3): 379-382.
40. Lara N, Baker GB, Archer S, Le-Melledo JM. Increased cholesterol levels during paroxetine administration in healthy men. *J Clin Psychiatry*. 2003 Dec; 1455 – 1459.
41. Mancini C, Van Ameringen MV. Paroxetine in social phobia. *J Clin Psychiatry*. 1996; 57(11): 519-522.
42. Mason I. Paroxetine Hailed for Care Advance on Older Therapies. *Hosp Doct*. 1991 (18 APRIL): 34.
43. Mertens C, Pintens H. A double-blind, multicentre study of paroxetine and mianserin in depression. *Acta Psychiatr Scand Suppl*. 350:140.
44. Nelson DR, Pratt GD, Palmer KJ, Johnson AM., Bowery NG. Effect of paroxetine, a selective 5-hydroxytryptamine uptake inhibitor on beta-adrenoceptors in rat brain: autoradiographic and functional studies. *Neuropharmacol*. 1991; 30 (6): 607-616.
45. Oehrberg S, Christiansen PE, Behnke K, Borup AL, Severin B, Soegaard J, et al. Paroxetine in the treatment of panic disorder-A randomized double-blind placebo-controlled study. *Br J Psychiatry*. 1995; 167(3): 374-379.
46. Rasmussen JGC, Johnson AM. Incidence of Seizures During Treatment with Antidepressants, Including the New Selective Serotonin Re-Uptake Inhibitor, Paroxetine. *Proc 5th World Congr Biol Psychiatr Florence*. 1991: 40-41.
47. Rickels K, Amsterdam J, Clary C, Fox I, Schweizer E, Weise C. The efficacy and safety of paroxetine compared with placebo in outpatients with major depression. *J Clin Psychiatry*. 1992; 53 Suppl: 30-32.
48. Ringold AL. Paroxetine efficacy in social phobia. *J Clin Psychiatry*. 1994; 55(8): 363-364.
49. Ross R. Atherosclerosis. In: Bennet, Plum, editors. *Cecil Textbook of Medicine* 20<sup>th</sup> ed. 1996. p.292-3.



50. Shrivastava RK, Shrivastava SH, Overweg N, Blumhardt CL. A double-blind comparison of paroxetine, imipramine and placebo in major depression. *J Clin Psychiatry*. 1992; 53 Suppl: 48-51.
51. Smith WT, Glaudin V. A placebo-controlled trial of paroxetine in the treatment of major depression. *J Clin Psychiatry*. 1992; 53 Suppl: 36-39.
52. Stein MB, Mariette J, Chartier MJ, Hazen AL, Kroft CD, Chale RA, Cote D, et al. Paroxetine in the treatment of generalized social phobia: open-label treatment and double-blind placebo-controlled discontinuation. *J Clin Psychopharmacol*. 1996; 16(3): 218-222.
53. Thomas DR, Nelson DR, Johnson AM. Biochemical effects of the antidepressant paroxetine, a specific 5-hydroxytryptamine uptake inhibitor. *Psychopharmacol*. 1987; 93(2): 193-200.
54. Tulloch IF, Johnson AM. The pharmacologic profile of paroxetine, a new selective serotonin reuptake inhibitor. *J Clin Psychiatry*. 1992; 53 Suppl: 7-12.
55. Von Bahr C, Movin G, Nordin C, Linden A, Hammarlund-Udenaes M, Hedberg A et al. Plasma levels of thioridazine and metabolites are influenced by the debrisoquin hydroxylation phenotype. *Clin Pharmacol Ther*. 1991; 49 (3): 234-240.
56. Walsh-Sukys MC, Tyson JE, Wright LL, Bauer CR, Korones SB, Stevenson DK et al. Persistent pulmonary hypertension of the newborn in the era before nitric oxide: practice variation and outcomes. *Pediatrics*. 2000 Jan; 14-20.

**PART III: CONSUMER INFORMATION**

**PrPAXIL CR  
paroxetine controlled release tablets**

This leaflet is part III of a three-part "Product Monograph" published when PAXIL CR was approved for sale in Canada and is designed specifically for Consumers. This leaflet is a summary and will not tell you everything about PAXIL CR. Contact your doctor or pharmacist if you have any questions about the drug.

Please read this information before you start to take your medication, even if you have taken this drug before. Keep this information with your medicine in case you need to read it again.

**ABOUT THIS MEDICATION**

**What the medication is used for:**

PAXIL CR has been prescribed to you by your doctor to relieve your symptoms of:

- depression (feeling sad, a change in appetite or weight, difficulty concentrating or sleeping, feeling tired, headaches, unexplained aches and pain)
- panic attacks
- social phobia (social anxiety disorder) - avoidance and/or fear of social situations
- premenstrual dysphoric disorder (PMDD) - where you may have episodes of major depression, severe mood changes/anxiety, irritability, physical pain and difficulty doing day to day tasks in the few weeks before your period

**What it does:**

PAXIL CR belongs to the family of medicines called selective serotonin reuptake inhibitors (SSRIs). PAXIL CR is thought to work by increasing the levels of a chemical in the brain called serotonin (5-hydroxytryptamine).

**When it should not be used:**

Do not use PAXIL CR if you are:

- allergic to it or any of the components of its formulation. See list of components at the end of this section
- currently taking or have recently taken monoamine oxidase (MAO) inhibitor antidepressants (e.g. phenelzine sulphate, moclobemide), or linezolid, a MAO inhibitor antibiotic
- currently taking or have recently taken thioridazine or pimozide

**What the medicinal ingredient is:**

Paroxetine hydrochloride.

**What the important nonmedicinal ingredients are:**

Lactose monohydrate.  
FD&C yellow No. 6 Aluminium Lake (in PAXIL CR 12.5 mg only).

**Other non-medicinal ingredients include:** colloidal silicon dioxide, glyceryl behenate, hydroxypropyl methylcellulose, magnesium stearate, methacrylic acid copolymer type C, polyethylene glycol, polysorbate 80, polyvinylpyrrolidone, sodium lauryl sulphate, talc, titanium dioxide, triethyl citrate. PAXIL CR 12.5 mg tablets also contain D&C yellow No.10 Aluminium Lake, and yellow ferric oxide. PAXIL CR 25 mg tablets also contain D&C red No. 30 Aluminium Lake and red ferric oxide. PAXIL CR® 37.5 mg tablets also contain FD&C blue No. 2 and yellow ferric oxide.

There is no ethanol, gluten, sulfite, or tartrazine in PAXIL CR.

**What dosage forms it comes in:**

PAXIL CR is available as tablets containing 12.5 mg (yellow) or 25 mg (pink) or 37.5 mg\* (blue) paroxetine (as paroxetine hydrochloride).

*\* 37.5 mg tablets are not available in Canada*

**WARNINGS AND PRECAUTIONS**

**During treatment with these types of medications it is important that you and your doctor have good ongoing communication about how you are feeling.**

PAXIL CR is not for use in children under 18 years of age.

**Changes in Feelings and Behaviour:**

It is important that you have good communication with your doctor about how you feel. Discussing your feelings and treatment with a friend or relative who can tell you if they think you are getting worse is also useful.

Some patients may feel worse when first starting or changing the dose of drugs such as PAXIL CR. You may feel more anxious or may have thoughts of hurting yourself or others, especially if you have had thoughts of hurting yourself before. These changes in feelings can happen in patients treated with drugs like PAXIL CR for any condition, and at any age, although it may be more likely if you are aged 18 to 24 years old. **If this happens, see your doctor immediately.** Do not stop taking PAXIL CR on your own.

Taking PAXIL CR may increase your risk of breaking a bone if you are elderly or have osteoporosis or have other major risk factors for breaking a bone. You should take extra care to avoid falls especially if you get dizzy or have low blood pressure.

Medicines like PAXIL CR may affect your sperm. Fertility in some men may be reduced while taking PAXIL CR.

**BEFORE you use PAXIL CR tell your doctor or pharmacist:**

- all your medical conditions, including a history of seizures, liver or kidney disease, heart problems
- any medications (prescription or non-prescription) which you are taking or have recently taken, especially monoamine oxidase inhibitor antidepressants (e.g. phenelzine sulphate, moclobemide) or any other antidepressants, thioridazine, pimozide, drugs used to prevent fits (anticonvulsants), drugs for Parkinson's disease, or drugs containing tryptophan
- if you are taking tamoxifen (used to treat breast cancer)
- if you have ever had any allergic reactions to medications, food etc.
- if you are taking hormonal oral contraceptives and are being prescribed PAXIL CR for Premenstrual Dysphoric Disorder
- any natural or herbal products you are taking (e.g. St. John's Wort)
- if you are pregnant or thinking about becoming pregnant, or if you are breast feeding
- your habits of alcohol and /or street drug consumption
- if you drive a vehicle or perform hazardous tasks during your work
- if you had a recent bone fracture, or if you were told you have osteoporosis or risk factors for osteoporosis
- if you have a bleeding disorder or have been told that you have low platelets
- if you are allergic to a particular yellow dye known as FD&C Yellow No. 6 aluminium lake

**Effects on Pregnancy and Newborns**

As stated above, ask your doctor or pharmacist for advice before taking any medicine including PAXIL CR. **If you are already taking/using PAXIL CR and have just found out that you are pregnant, you should talk to your doctor immediately. You should also talk to your doctor if you are planning to become pregnant.**

**Taking PAXIL CR in early stages of pregnancy:**

Some studies have suggested an increased risk of birth defects, particularly heart defects, in babies whose mothers received PAXIL CR in the first few months of pregnancy. These studies found that about 2 in 100 babies (2%) whose mothers received paroxetine in early pregnancy had a heart defect, compared with the normal rate of 1 in 100 babies (1%) seen in the general population. Also, in cases where PAXIL CR has been used, there have been reports of premature births although it is not known if these premature births are due to the use of PAXIL CR.

**Taking PAXIL CR in later stages of pregnancy:****Possible complications at birth (from taking any newer antidepressant, including PAXIL CR):**

Post-marketing reports indicate that some newborns whose mothers took an SSRI (selective serotonin reuptake inhibitor) or other newer antidepressant, during pregnancy have developed complications at birth requiring prolonged hospitalization, breathing support and tube feeding. Reported symptoms included feeding and/or breathing difficulties, seizures, tense or overly relaxed muscles, jitteriness and constant crying.

In most cases, the newer antidepressant was taken during the third trimester of pregnancy. These symptoms are consistent with either a direct adverse effect of the antidepressant on the baby, or possibly a discontinuation syndrome caused by sudden withdrawal from the drug. These symptoms normally resolve over time. However, if your baby experiences any of these symptoms, contact your doctor as soon as you can.

**Persistent Pulmonary Hypertension (PPHN) and newer antidepressants, including PAXIL CR:**

The use of PAXIL CR during pregnancy, particularly during late pregnancy, may increase the risk of a serious lung condition called persistent pulmonary hypertension of the newborn (PPHN) that causes breathing difficulties in newborns soon after birth. In the general population, PPHN is known to occur in about 1 or 2 per 1000 newborns but this may be increased 4 to 6 times in babies whose mothers used PAXIL CR during late pregnancy.

If you are pregnant and taking an SSRI, or other newer antidepressants, you should discuss the risks and benefits of the various treatment options with your doctor. It is very important that you do NOT stop taking these medications without first consulting your doctor. See SIDE EFFECTS AND WHAT TO DO ABOUT THEM section for more information.

**Angle-closure Glaucoma:**

PAXIL CR can cause an acute attack of glaucoma. Having your eyes examined before you take PAXIL CR could help identify if you are at risk of having angle-closure glaucoma. Seek immediate medical attention if you experience:

- eye pain
- changes in vision
- swelling or redness in or around the eye

**INTERACTIONS WITH THIS MEDICATION**

**Do not use PAXIL CR if you are taking or have recently taken (within the last 2 weeks) monoamine oxidase inhibitors, methylthionium chloride (methylene blue), thioridazine or pimozide.**

**You should tell your doctor if you are taking or have recently taken any medications (prescription, non-prescription or natural/herbal), especially:**

- other antidepressants, such as SSRIs and certain tricyclics
- other drugs that affect serotonin such as, lithium, linezolid, tramadol, tryptophan, St. John's Wort, triptans used to treat migraines
- certain medicines used to treat pain, such as fentanyl (used in anaesthesia or to treat chronic pain), tramadol, tapentadol, meperidine, methadone, pentazocine
- tamoxifen, which is used to treat breast cancer or fertility problems
- certain medicines used to treat patients with irregular heart beats (arrhythmias)
- certain medicines used to treat schizophrenia
- certain medicines used to treat bipolar depression, such as lithium
- a combination of fosamprenavir and ritonavir, used to treat Human Immunodeficiency Virus (HIV) infection
- procyclidine, which is used to treat Parkinson's Disease or other movement disorders
- metoprolol, which is used to treat high blood pressure and angina
- certain medicines which may affect blood clotting and increase bleeding, such as oral anti-coagulants (e.g. warfarin, dabigatran), acetylsalicylic acid (e.g. aspirin) and other non-steroidal anti-inflammatory drugs (e.g. ibuprofen)
- certain medicines used to treat epilepsy
- In general, drinking alcoholic beverages should be kept to a minimum or avoided completely while taking PAXIL CR
- certain medicines used to treat cough, such as dextromethorphan

**PROPER USE OF THIS MEDICATION**

**Usual dose:**

How to take PAXIL CR

- **Depression, Panic Disorder and Social Phobia (social anxiety disorder):** It is very important that you take PAXIL CR exactly as your doctor has instructed. The starting dose for depression is 25 mg once daily and for panic disorder it is 12.5 mg once daily. Generally most people take between 12.5 mg to 37.5 mg of PAXIL CR per day for social phobia (social anxiety disorder).
- **Premenstrual Dysphoric Disorder (PMDD):** For premenstrual dysphoric disorder (PMDD) the usual dose is 12.5 mg once daily starting 14 days prior to the expected onset of your period, and stopping on the first day of your period. Your doctor may change the

dose or dosing schedule, depending on how you respond to your medication. PMDD is a disorder which should not be confused with the symptoms of Premenstrual Syndrome (PMS). Your doctor must confirm a diagnosis of PMDD before you can take PAXIL CR.

- Take your tablets in the morning, preferably with food. You should swallow the tablets whole with water. Do not chew or crush them.
- You should continue to take your medicine even if you do not feel better, as it may take a number of weeks for your medicine to work.
- Keep taking your tablets, as instructed, until the doctor tells you to stop.
- You should talk to your doctor before you stop taking your medication on your own.

**Remember: This medicine has been prescribed only for you. Do not give it to anybody else, as they may experience undesirable effects, which may be serious.**

**Missed Dose:**

If you forget to take your tablet in the morning, take it as soon as you remember. Take your next dose at the normal time the next morning, then carry on as before. Do not try to make up for a missed dose by taking a double dose the next time.

**Overdose:**

If you have taken a large number of tablets all at once, contact your doctor or the nearest hospital emergency department immediately, even though you may not feel sick. Show the doctor your pack of tablets.

In case of drug overdose, contact a health care practitioner, hospital emergency department or regional Poison Control Centre immediately, even if there are no symptoms.

**SIDE EFFECTS AND WHAT TO DO ABOUT THEM**

Like all medications, PAXIL CR can cause some side effects. You may not experience any of them. For most patients these side effects are likely to be minor and temporary. However, some may be serious. Some of these side effects may be dose related. Consult your doctor if you experience these or other side effects, as the dose may have to be adjusted.

The most common side effects of PAXIL CR are:

- nausea/vomiting
- dry mouth
- drowsiness
- weakness
- dizziness
- sweating
- tremor
- nervousness
- feeling agitated

- blurred vision
- sleep disturbances
- weight gain
- sexual problems
- Although psychiatric disorders are often associated with decreases in sexual desire, performance and satisfaction, treatment with this medication may lead to further decreases.

Other effects may include loss of appetite, constipation, diarrhea, abnormal dreams (including nightmares), headache and menstrual period disorders (including heavy periods, bleeding between periods and absence of periods).

PAXIL CR does not usually affect people’s normal activities. However, some people feel sleepy while taking it, in which case they should not drive or operate machinery.

PAXIL CR may raise cholesterol levels in some patients.

**Discontinuation Symptoms**

Contact your doctor before stopping or reducing your dosage of PAXIL CR. Symptoms such as dizziness, lightheadedness, nausea, vomiting, agitation/restlessness, anxiety, sweating, headache, sleep disturbance, electric shock sensations, tinnitus (buzzing, hissing, whistling, ringing or other persistent noise in the ears) and other symptoms have been reported after stopping treatment, reducing the dosage of PAXIL CR, or when a dose is missed. These symptoms usually disappear without needing treatment. Tell your doctor immediately if you have these or any other symptoms. Your doctor may adjust the dosage of PAXIL CR to alleviate the symptoms. See WARNINGS AND PRECAUTIONS section for more information.

**Effects on Newborns**

Some newborns whose mothers took an SSRI (Selective Serotonin Reuptake Inhibitor) or other newer antidepressant, such as PAXIL CR, during pregnancy have shown such symptoms as breathing and feeding difficulties, jitteriness and constant crying. If your baby experiences any of these symptoms, contact your doctor as soon as you can. See WARNINGS AND PRECAUTIONS section for more information.

SERIOUS SIDE EFFECTS, HOW OFTEN THEY HAPPEN AND WHAT TO DO ABOUT THEM				
Symptom / effect		Talk with your doctor or pharmacist right away		Seek immediate emergency medical assistance
		Only if severe	In all cases	
Uncommon	Hallucinations [strange visions or sounds]		✓	
Uncommon	Uncontrollable movements of the body or face		✓	
Uncommon	Inability to urinate or loss of control of the bladder ( <i>urinary incontinence</i> ).		✓	
Uncommon	Low Platelets [bruising or unusual bleeding from the skin or other areas]		✓	
Uncommon	Dilated pupils		✓	
Uncommon	Low blood pressure (may cause dizziness, lightheadedness or fainting when standing up from a sitting down or lying position)		✓	
Rare	Severe allergic reactions [red and lumpy skin rash, itching, hives, swelling of the lips, face, tongue, throat, trouble breathing, wheezing, shortness of breath, skin rashes, collapse or loss of consciousness]			✓
Rare	Allergic reactions (skin rash alone)		✓	
Rare	Low sodium level in blood [symptoms of tiredness, weakness, confusion combined with achy, stiff or uncoordinated muscles]		✓	

SERIOUS SIDE EFFECTS, HOW OFTEN THEY HAPPEN AND WHAT TO DO ABOUT THEM				
Symptom / effect		Talk with your doctor or pharmacist right away		Seek immediate emergency medical assistance
		Only if severe	In all cases	
Rare	Akathisia [feeling restless and unable to sit or stand still]		✓	
Rare	Mania [overactive behaviour and thoughts]		✓	
Rare	Seizures [loss of consciousness with uncontrollable shaking (“fit”)]			✓
Rare	Restless Legs Syndrome (irresistible urge to move the legs)		✓	
Rare	Angle-closure Glaucoma [eye pain, changes in vision and swelling or redness in or around the eye]			✓
Rare	Abnormal secretion of breast milk in men and women		✓	
Rare	Increased sensitivity of the skin to sunlight	✓		
Rare	Swelling of hands, ankles or feet		✓	
Rare	Menstrual period disorders (including heavy periods, bleeding between periods and absence of periods).		✓	

SERIOUS SIDE EFFECTS, HOW OFTEN THEY HAPPEN AND WHAT TO DO ABOUT THEM				
Symptom / effect		Talk with your doctor or pharmacist right away		Seek immediate emergency medical assistance
		Only if severe	In all cases	
Very Rare	Serotonin syndrome and Neuroleptic Malignant Syndrome [a combination of most or all of the following: confusion, restlessness, sweating, shaking, shivering, high fever, hallucinations, sudden jerking of the muscles, muscle stiffness, feeling very agitated or irritable, fast heartbeat]. The severity can increase, leading to loss of consciousness			✓
Very Rare	Gastrointestinal bleeding [vomiting blood or passing blood in stools]			✓
Very Rare	Liver disorder [symptoms include nausea, vomiting, loss of appetite combined with itching, yellowing of the skin or eyes, dark urine]			✓
Very Rare	A severe widespread rash with blisters and peeling skin, often with sores or pain in the mouth or eyes			✓
Very Rare	Skin rash, which may blister, and looks like small targets (central dark spots surrounded by a paler area, with a dark ring around the edge) called <i>erythema multiforme</i>			✓

**SERIOUS SIDE EFFECTS, HOW OFTEN THEY HAPPEN AND WHAT TO DO ABOUT THEM**

Symptom / effect		Talk with your doctor or pharmacist right away		Seek immediate emergency medical assistance
		Only if severe	In all cases	
See Warnings & Precautions	<ul style="list-style-type: none"> <li>- Changes in feelings or behaviour (anger, anxiety, suicidal or violent thoughts)</li> <li>- Thoughts of death or suicide</li> </ul>		✓	✓

*This is not a complete list of side effects. For any unexpected effects while taking PAXIL CR contact your doctor or pharmacist.*

**HOW TO STORE IT**

- Keep all medication out of sight and reach of children
- Store between 15-25°C
- Keep container tightly closed
- If your doctor tells you to stop taking PAXIL CR please return any leftover medicine to your pharmacist.

**REPORTING SUSPECTED SIDE EFFECTS**

You can report any suspected adverse reactions associated with the use of health products to the Canada Vigilance Program by one of the following 3 ways:

- Report online at <https://www.canada.ca/en/health-canada/services/drugs-health-products/medeffect-canada/adverse-reaction-reporting.html>
- Call toll-free at 1-866-234-2345
- Complete a Canada Vigilance Reporting Form and:
  - Fax toll-free to 1-866-678-6789, or
  - Mail to: Canada Vigilance Program  
Health Canada  
Postal Locator 0701E  
Ottawa, ON K1A 0K9

Postage paid labels, Canada Vigilance Reporting Form and the adverse reaction reporting guidelines are available on the MedEffect™ Canada Web site at <https://www.canada.ca/en/health-canada/services/drugs-health-products/medeffect-canada/adverse-reaction-reporting.html>

*NOTE: Should you require information related to the management of side effects contact your health professional. The Canada Vigilance Program does not provide medical advice.*

**MORE INFORMATION**

You may need to read this package insert again. Please do not throw it away until you have finished your medicine. This document plus the full product monograph, prepared for health professionals can be found at:

<http://www.gsk.ca> or by contacting the sponsor, GlaxoSmithKline Inc.  
7333 Mississauga Road  
Mississauga, Ontario  
L5N 6L4  
1-800-387-7374

This leaflet was prepared by GlaxoSmithKline Inc.

Last revised: March 8, 2018

©2018 GSK group of companies or its licensor. Trademarks are owned by or licensed to the GSK group of companies.